

Entered By: Kristie Wendler

17 March 2004

all SRH

Ref ID #40322

S.W. Woodmansee and J.L. Sadle. 2003. Observations of vascular plants at Big Cypress National Preserve Cell #H44, Big Cypress National Preserve, Collier County. July 2003. The Institute for Regional Conservation, Miami, FL.

SiteRefID
52490
52491

Site
Big Cypress National Preserve Cell #H44
Big Cypress National Preserve

write in air

Re-use cell # H44

~~Handwritten scribble~~

Collected

Wardlaw's Saddle 17 July 2008

Plants of Big Cypress based on Muss et al. (2002)			
CELL	Point # 259 259	Asclepias lanceolata	Caperonia castaneifolia
Date: 7/17/08	Observers: ...	Asclepias longifolia	Capparis cynophallophora*
		Asclepias tuberosa	Capparis flexuosa
		Asclepias verticillata	Capraria biflora
		Asimina reticulata	Cardiospermum corindum
		Asplenium serratum	Cardiospermum microcarpum
		Aster adnatus	Carex gigantea!
		Aster bracei	Carex longii*!
		Aster carolinianus	Carex lupuliformis
		Aster concolor	Carex vexans!
		Aster dumosus	Carica papaya
		Aster elliotii	Carphephorus corymbosus
		Aster subulatus	Carphephorus odoratissimus
		Avicennia geminans	Caryota mitis
		Axonopus compressus*	Cassytha filiformis
		Axonopus fissifolius*!	Casuarina equisetifolia
		Axonopus furcatus	Casuarina glauca
		Azolla caroliniana	Catharanthus roseus
		Baccharis angustifolia	Catopsis berteroniana
		Baccharis glomeruliflora	Catopsis floribunda
		Baccharis halimifolia	Celtis laevigata
		Bacopa caroliniana	Cenchrus echinatus*
		Bacopa monnieri	Cenchrus gracillimus*!
		Bartonia paniculata	Cenchrus incertus
		Bauhinia purpurea	Centella asiatica!
		Bauhinia variegata	Centrosema virginianum
		Bejaria racemosa	Cephalanthus occidentalis
		Berchemia scandens	Ceratophyllum demersum
		Bidens alba var. radiata	Ceratopteris thalictroides
		Bigelowia nudata subsp. australis	Chamaecrista fasciculata
		Bischofia javanica	Chamaecrista nictitans var. ...
		Blechnum serrulatum	Chamaesyce blodgettii
		Blechnum pyramidatum	Chamaesyce conferta!
		Bletila purpurea	Chamaesyce hirta
		Boehmeria cylindrica	Chamaesyce hypericifolia
		Boerhavia diffusa	Chamaesyce hyssopifolia
		Boltonia diffusa	Chamaesyce lasiocarpa
		Bothriochloa ischaemum var. songarica!	Chamaesyce mendezii
		Bothriochloa pertusa!	Chamaesyce ophthalmica
		Brassica rapa	Chamaesyce pergamena
		Buchnera americana	Chamaesyce porteriana
		Bucida buceras	Chaptalia tomentosa
		Bulbostylis ciliatifolia	Chiococca alba
		Bulbostylis stenophylla	Chiococca parvifolia
		Burmannia capitata	Chrysobalanus icaco
		Burmannia flava	Chrysophyllum oliviforme
		Bursera simaruba	Chrysopogon pauciflorus
		Caesalpinia bonduc	Chrysopsis subulata
		Calliandra haematocephala	Cirsium horridum
		Callicarpa americana	Cirsium nuttallii
		Calceogon multiflorus!	Cissus verticillata
		Calopogon tuberosus!	Citharexylum spinosum
		Calytranthes pallens!	Citrus aurantium
		Calystegia sepium subsp. limnophila	Citrus limon
		Campanula floridana	Citrus sinensis*
		Campsis radicans	Citrus x paradisi
		Campylocentrum pachyrrhizum	Cladium jamaicense
		Campylocheurum angustifolium*	Clematis baldwinii
		Campylocheurum phyllitidis	Clitoria mariana
		Canna flaccida	Cnidioscolus stimulosus

111

✓ Cocoloba diversifolia	Dichantheium ensifolium	Eragrostis hypnoides*!
Codiaeum variegatum var. pictum	Dichantheium ensifolium var. unciphylum!	Eragrostis spectabilis
Coelorachis rugosa	Dichantheium erectifolium	Erechtites hieracifolia
Coleus pumilus	Dichantheium laxiflorum *!	Eremochloa ophiuroides
Colocasia esculenta	Dichantheium leucothrix *!	Erigeron quercifolius
Colubrina arborescens	Dichantheium ovale	Erigeron vernus
Commelina diffusa var. diffusa	Dichantheium portoricense	Eriobotrya japonica
Commelina erecta	Dichantheium strigosum var. glabrescens	Eriocaulon compressum
Conocarpus erectus	Dichantheium aristatum*!	Eriocaulon decangulare
✓ Conoclinium coelestinum	Dichondra carolinensis	Eriocaulon ravenelii !
Conyza canadensis var. pusilla	Dichondra micrantha	Eriochloa michauxii var. michauxii*
Corchorus hirtus*	Dicliptera sexangularis	Erucastrum gallicum
Corchorus siliquosus	Digitaria ciliaris *!	Eryngium baldwinii
Cordia globosa	Digitaria filiformis var. filiformis !	Eryngium yuccifolium
Coreopsis leavenworthii	Digitaria longiflora	Erythrina herbacea
Comus foemina	Digitaria violascens!	Erythrodes querceticola
✓ Crinum americanum	Diodia virginiana	Eugenia axillaris
Crotalaria lanceolata	Dioscorea bulbifera	Eugenia uniflora
Crotalaria pallida var. obovata	Dioscorea sansibarensis	Eulophia alta
Crotalaria pumila*!	Diospyros virginiana	Eupatorium capillifolium
Crotalaria rotundifolia	Dodonaea angustifolia	Eupatorium leptophyllum
Crotalaria spectabilis	Drosera brevifolia	Eupatorium mikanioides
Croton glandulosus var. glandulosus *!	Drosera capillaris	Eupatorium mohrii
Croton humilis	Drymaria cordata*!	Eupatorium rotundifolium
Ctenitis sloanei	Drypetes lateriflora	Eupatorium serotinum
Cuphea carthagenensis	Dypsis lutescens *	Euphorbia graminea *!
Cuscuta pentagona	Dyschoriste angusta	Euphorbia polyphylla
Cynanchum blodgettii	Dyschoriste oblongifolia*!	Eustachys glauca
Cynanchum scoparium	Echinochloa colona	Eustachys petraea
Cynodon dactylon!	Echinochloa crus-galli	Eustoma exaltatum
Cyperus articulatus	Echinochloa muricata!	Euthamia caroliniana
Cyperus compressus	Echinochloa paludigena	Evolvulus alsinoides*!
Cyperus croceus	Echinochloa walteri	Evolvulus sericeus
Cyperus distinctus	Echinodorus berteroi	Exothea paniculata
Cyperus esculentus	Eclipta prostrata	Ficus aurea!
Cyperus flavescens	Eichhornia crassipes	Ficus benamina * C
Cyperus haspan	Eleocharis albida	Ficus citrifolia
Cyperus involucratus	Eleocharis atropurpurea	Ficus microcarpa *
Cyperus ligularis	Eleocharis baldwinii!	Fimbristylis autumnalis
Cyperus odoratus	✓ Eleocharis cellulosa	Fimbristylis caroliniana
Cyperus planifolius	Eleocharis elongata	Fimbristylis cymosa
Cyperus polystachyos!	Eleocharis flavescens	Fimbristylis schoenoides
Cyperus pumilus	Eleocharis geniculata	Fimbristylis spadicea!
Cyperus retrorsus	Eleocharis interstincta	Flaveria linearis
Cyperus surinamensis	Elephantopus elatus	Forestiera segregata
Cyperus tetragonus*!	Eleusine indica	Fraxinus caroliniana
Cyrtopodium punctatum	Elionurus tripsacoides	Fuirena breviseta
Dactyloctenium aegyptium	Elytraia caroliniensis var. angustifolia	Fuirena scirpoidea
Dalbergia sissoo	Emilia fosbergii*!	Furcraea selloa
Dalea carnea	Encyclia cochleata	Galactia elliotii
Dalea carthagenensis var. floridana	✓ Encyclia tampensis	Galactia regularis
Desmodium floridanum	Epidendrum anceps	Galactia striata
Desmodium incanum	Epidendrum floridense	Galactia volubilis
Desmodium paniculatum	Epidendrum nocturnum	Galium hispidulum
Desmodium tortuosum	Epidendrum rigidum	Gaura angustifolia
Desmodium triflorum	Equisetum hyemale var. affine	Glandularia maritima
Desmodium viridiflorum	Eragrostis atrovirens!	Gnaphalium falcatum!
Dichantheium aciculare	Eragrostis bahiensis	Gnaphalium obtusifolium
Dichantheium commutatum	Eragrostis ciliaris	Gnaphalium pennsylvanicum
Dichantheium dichotomum	Eragrostis elliotii	Gnaphalium purpureum

win

Gomphrena serrata	Iresine diffusa	Lycopus rubellus
Gouania lupuloides	Iris hexagona	Lygodium microphyllum
Gratiola ramosa	Isoetes flaccida !	Lyonia fruticosa
Grevillea robusta	Iva microcephala	Lyonia lucida
Guzmania monostachia	Ixora coccinea	Lysiloma latisliquum
Gymnopogon brevifolius	Jacquemontia curtisii	✓ Lythrum alatum var. lanceolatum
Gymnopogon chapmanianus	Jacquemontia pentanthos	Lythrum lineare
Habenaria floribunda	Juncus marginatus	Macroptilium atropurpureum
Habenaria nivea	Juncus megacephalus	Macroptilium lathyroides
Habenaria quinqueseta	Juncus polycephalus	Magnolia grandiflora
Habenaria repens	Juncus repens	Magnolia virginiana
Hamelia patens	Juncus roemerianus	Malachra urens
Harrisella filiformis	Juncus trigonocarpus	Malaxis spicata
Hedyotis procumbens !	Justicia angustal	Malvaviscus arboreus var. drummondii
Hedyotis uniflora	Kalanchoe pinnata	Mangifera indica
Helenium amarum	Kalanchoe tubiflora	Maxillaria crassifolia
Helenium pinnatifidum	Kigelia pinnata	Mecardonia acuminata subsp. peninsularis
Helianthus angustifolius	Kosteletzkya virginica	Mecardonia procumbens!
Helianthus radula	Krugiodendron ferreum	Medicago lupulina*!
Heliotropium angiospermum *	Kyllinga brevifolia	Melaleuca quinquenervia
Heliotropium polyphyllum	Lachnocaulon anceps	Melaleuca viminalis
Heteropogon contortus	Laguncularia racemosa	Melanthera angustifolia!
Heteropogon melanocarpus	Lantana camara	Melanthera parvifolia
Heterotheca subaxillaris	Lantana depressa var. sanibelensis!	Melanthera nivea
Hibiscus grandiflorus !	Lantana involucrata	Meilolotus albus
Hibiscus poeppigii !	Lasiacis divaricata	Melochia pyramidata
Hibiscus rosa-sinensis var. schizopetalus	Leersia hexandra	Melochia spicata
Hibiscus tiliaceus	Lemna obscura	Melothria pendula
Hieracium megacephalon *	Lepidium virginicum	Metopium toxiferum
✓ Hippocratea volubilis	Leptochloa fascicularis!	Micranthemum glomeratum
Hydrilla verticillata	Leucaena leucocephala	Microgramma heterophylla !
Hydrocotyle bonariensis	Liatris garberi	Mikania cordifolia
Hydrocotyle umbellata	Liatris gracilis	✓ Mikania scandens
Hydrocotyle verticillata	Liatris graminifolia	✓ Mitreola petiolata
Hydrolea corymbosa	Liatris pauciflora	Mitreola sessilifolia
Hymenocallis palmeri	Liatris spicata	Monanthochloe littoralis
Hyparrhenia rufa	Licania michauxii	Morus alba
Hypericum brachyphyllum!	Lilium catesbaei	Morus rubra
Hypericum cistifolium	Limnophila sessiliflora	Mucuna pruriens *
Hypericum crux-andreae!	Lindernia crustacea	Muhlenbergia capillaris
Hypericum hypericoides	Lindernia dubia var. anagallidea	Murdannia nudiflora
Hypericum tetrapetalum	Lindernia grandiflora	Murdannia spirata
Hypoxis juncea	Linum carteri var. smallii	Musa xparadisica
Hypoxis wrightii	Linum floridanum	Myrcianthes fragrans
Hyptis alata	Linum medium var. texanum!	✓ Myrica cerifera
Hyptis mutabilis	Liparis nervosa	Myriophyllum aquaticum
Hyptis pectinata	Lobelia feayana	Myriophyllum heterophyllum
Hyptis verticillata	Lobelia glandulosa	Myriophyllum pinnatum
Ilex cassine!	Lobelia homophylla	Najas guadalupensis
Ilex glabra	Lobelia paludosa !	Najas marina
Imperata brasiliensis	Ludwigia alata!	Najas wrightiana
Imperata cylindrica	Ludwigia curtissii	Nelumbo lutea
Indigofera spicata	Ludwigia erecta	Nephrolepis biserrata
Ionopsis utricularioides	Ludwigia maritima	✓ Nephrolepis exaltata
Ipomoea alba	✓ Ludwigia microcarpa	Nephrolepis multiflora!
Ipomoea batatas	Ludwigia octovalvis	Neyraudia reynaudiana
Ipomoea cordatotriloba	Ludwigia peruviana	Nicotiana tabacum
Ipomoea indica var. acuminata	Ludwigia repens !	Nuphar lutea subsp. advena
✓ Ipomoea sagittata	Ludwigia suffruticosa	Nymphaea elegans
Ipomoea triloba	Lycium carolinianum	Nymphaea lotus

uvr

Nymphaea odorata	Phyla stoechadrifolia*!	Pteris bahamensis
Nymphoides aquatica	Phyllanthus caroliniensis subsp. saxicola	Pteris tripartita
Ocimum campechianum	Phyllanthus urinaria	Pteris vittata
Ocotea coriacea	Physalis angustifolia	Pteris xdelchampsii
Oeceoclades maculata	Physalis pubescens	Pterocaulon pycnostachyum
Oenothera humifusa	Physalis walteri	Ptilimnium capillaceum
Ophioglossum palmatum	Physostegia purpurea!	Quercus chapmanii *!
Ophioglossum petiolatum	Phytolacca americana	Quercus geminata
Oplismenus hirtellus	Pilea microphylla!	Quercus laurifolia
Opuntia humifusa	Piloblephis rigida	Quercus minimal
Osmunda regalis var. spectabilis	Pinguicula lutea	Quercus pumila
Oxalis corniculata	Pinguicula pumila	Quercus virginiana
Oxypolis filiformis	Pinus elliotii var. densa	Randia aculeata
Palafoxia feayi	Piper aduncum	✓ Rapanea punctata
Panicum dichotomiflorum	Piriqueta caroliniana	Reimarochloa oligostachya
Panicum dichotomiflorum var. bartowense	Pisonia aculeata	Rhabdadenia biflora
Panicum hemitomon	Pistia stratiotes	Rhapis excelsa
Panicum hians!	Pithecellobium unguis-cati	Rhexia cubensis
Panicum repens	Pityopsis graminifolia	Rhexia mariana!
Panicum rigidulum	Pityrogramma trifoliata	Rhexia nashtii
Panicum tenerum	Plantago major!	Rhexia nuttallii
Panicum virgatum	Pleopeltis polypodioides var. michauxiana	✓ Rhizophora mangle
Parietaria floridana	Pluchea carolinensis	Rhus copallinum
Parthenocissus quinquefolia	Pluchea odorata	Rhynchelytrum repens
Paspalidium geminatum!	Pluchea rosea	Rhynchosia minima
Paspalum blodgettii	Plumbago scandens	Rhynchosia swartzii*
Paspalum caespitosum	Poinsettia heterophylla	Rhynchospora breviseta
Paspalum conjugatum!	Polygala baldwinii	Rhynchospora chapmanii
Paspalum distichum	Polygala boykinii	Rhynchospora colorata
Paspalum fimbriatum	Polygala cruciata	Rhynchospora corniculata!
Paspalum floridanum!	Polygala grandiflora	Rhynchospora divergens
Paspalum monostachyum	Polygala incarnata	Rhynchospora fascicularis
Paspalum notatum	Polygala lutea	Rhynchospora globularis
Paspalum praecox*!	Polygala nana !	Rhynchospora intermedia
Paspalum repens	Polygala polygama !	Rhynchospora inundata
Paspalum setaceum	Polygala rugelii	Rhynchospora microcarpa!
Paspalum urvillei!	Polygala setacea	Rhynchospora miliacea
Passiflora pallens !	Polygala verticillata var. isocycla*!	Rhynchospora nitens
Passiflora suberosa	Polygonum densiflorum	Rhynchospora odorata
Pectis glaucescens	Polygonum hydropiperoides!	Rhynchospora tracyi
Pectis prostrata	Polygonum punctatum	Richardia grandiflora
Pectis xfloridana*!	Polygonum setaceum	Richardia scabra
Peltandra virginica	Polyprenum procumbens	Ricinus communis
Pennisetum purpureum	Polyradicion lindenii	Rivina humilis
Penstemon multiflorus	Polystachya concreta	Rorippa teres!
Pentalinon luteum	Pongamia pinnata	Rotala ramosior
Pentodon pentandrus!	Portulaca cordata	Rottboellia cochinchinensis
Peperomia alata	Ponthieva racemosa	Roystonea regia
Peperomia glabella	Portulaca oleracea!	Rubus trivialis
Peperomia obtusifolia	Portulaca pilosa	Rudbeckia hirta
Peperomia rotundifolia	Portulaca rubricaulis	Ruellia caroliniensis
Persea americana	Potamogeton illinoensis	Ruellia succulenta
Persea borbonia	Proserpinaca palustris	Ruellia tweediana
Persea palustris	Pseudelephantopus spicatus *	Rumex verticillatus
Phanopyrum gymnocarpon !*	Psidium guajava	✓ Ruppia maritima
✓ Phlebodium aureum	Psilotum nudum	✓ Sabal palmetto!
Phlox drummondii	Psychotria nervosa	Sabatia bartramii!
Phoradendron leucarpum	Psychotria sulzneri	Sabatia brevifolia
Phragmites australis	Pteridium aquilinum var. caudatum	Sabatia calycina
Phyla nodiflora	Pteridium aquilinum var. pseudocaudatum	Sabatia grandiflora

win

<i>Sabatia stellaris</i>	<i>Simarouba glauca</i>	✓ <i>Thelypteris kunthii!</i>
<i>Saccharum giganteum</i>	<i>Sisyrinchium angustifolium</i>	<i>Thelypteris ovata!</i>
Saccharum officinarum	<i>Sisyrinchium rosulatum</i>	<i>Thelypteris palustris</i> var. <i>pubescentis</i>
<i>Sacciolepis indica</i>	<i>Smilax auriculata</i>	<i>Thelypteris reticulata</i>
<i>Sacciolepis striata</i>	Smilax bona-nox	✓ <i>Tillandsia balbisiana</i>
<i>Sacoila lanceolata</i>	<i>Smilax laurifolia</i>	<i>Tillandsia fasciculata</i> var. <i>densispica</i>
<i>Sageretia minutiflora</i>	<i>Solanum americanum</i>	<i>Tillandsia flexuosa</i> !
<i>Sagittaria filiformis</i>	<i>Solanum capsicoides</i> *	✓ <i>Tillandsia paucifolia</i>
<i>Sagittaria graminea!</i>	<i>Solanum erianthum</i>	<i>Tillandsia pruinosa</i>
<i>Sagittaria graminea</i> var. <i>chapmanii</i>	✓ <i>Solanum verbascifolium</i>	<i>Tillandsia recurvata!</i>
<i>Sagittaria lancifolia</i>	<i>Solanum viarum</i>	<i>Tillandsia setacea</i>
<i>Salix caroliniana</i>	<i>Solidago fistulosa</i>	<i>Tillandsia usneoides</i>
<i>Salvia lyrata</i>	<i>Solidago gigantea</i>	✓ <i>Tillandsia utriculata</i>
<i>Salvia occidentalis</i>	Solidago odora var. <i>chapmanii</i>	<i>Tillandsia variabilis</i>
<i>Salvinia minima</i>	✓ <i>Solidago sempervirens</i>	<i>Tillandsia xsmalliana</i>
<i>Sambucus canadensis</i>	<i>Solidago stricta</i>	<i>Tournefortia hirsutissima</i>
<i>Samolus ebracteatus</i>	<i>Solidago tortifolia!</i>	Tournefortia volubilis
<i>Samolus valerandi</i> subsp. <i>parviflorus</i>	✓ <i>Spartina bakeri</i> !	✓ <i>Toxicodendron radicans</i>
<i>Sansevieria hyacinthoides</i>*	<i>Spermacoce assurgens</i>	<i>Tradescantia spathacea</i>
<i>Sapindus saponaria</i>	<i>Spermacoce floridana</i>	<i>Tradescantia zebrina</i>
← <i>Sarcostemma clausum</i>	<i>Spermacoce prostrata</i>	<i>Trema micranthum</i>
<i>Saururus cernuus</i>	<i>Spermacoce terminalis</i>	<i>Trichomanes holopterum</i>
<i>Schefflera actinophylla</i>	<i>Spermacoce tetraquetra</i>*	<i>Trichostema dichotomum</i>
✓ <i>Schinus terebinthifolius</i>	<i>Spermacoce verticillata</i>	<i>Trichostigma octandrum</i>
<i>Schizachyrium gracile</i> *!	<i>Spigelia anthelmia</i>*	<i>Tridax procumbens</i>
<i>Schizachyrium rhizomatum</i>	<i>Spiranthes brevilabris</i>	<i>Triphora gentianoides</i>
<i>Schizachyrium sanguineum</i>	<i>Spiranthes cernua</i>	<i>Tripsacum dactyloides</i>
<i>Schoenolirion albiflorum</i>	<i>Spiranthes laciniata</i>	<i>Tripsacum floridanum</i>
<i>Schoenus nigricans</i>	<i>Spiranthes longilabris</i>	<i>Turbina corymbosa</i>
<i>Schöepfia chrysophylloides</i>	<i>Spiranthes odorata</i>	<i>Typha domingensis</i>
<i>Scirpus tabernaemontani</i>	<i>Spiranthes torta</i>	<i>Typha latifolia</i>
<i>Scleria baldwinii</i>	<i>Spiranthes vernalis</i>	<i>Urena lobata</i>
<i>Scleria ciliata</i> var. <i>ciliata!</i>	<i>Spirodela polyrhiza</i> *!	<i>Urochloa fasciculata</i> var. <i>reticulata</i>
<i>Scleria georgiana!</i>	<i>Sporobolus domingensis</i>	<i>Urochloa mutica</i>
<i>Scleria hirtella</i> !	<i>Sporobolus indicus</i>	<i>Urochloa ramosa</i>
<i>Scleria lithosperma</i>*	<i>Sporobolus indicus</i> var. <i>pyramidalis</i>	<i>Utricularia cornuta</i>
<i>Scleria reticularis</i>	<i>Sporobolus junceus</i>	✓ <i>Utricularia foliosa</i>
<i>Scleria triglomerata!</i>	<i>Sporobolus pyramidatus</i>	<i>Utricularia gibba</i>
<i>Scleria verticillata</i>	<i>Stachytarpheta jamaicensis</i>	<i>Utricularia inflata</i>
<i>Scoparia dulcis</i>	<i>Stenandrium dulce</i>	<i>Utricularia purpurea</i>
<i>Senecio glabellus</i>	<i>Stenochlaena tenuifolia</i>	<i>Utricularia radiata</i>
<i>Senna alata</i>	<i>Stenotaphrum secundatum</i>	<i>Utricularia resupinata</i>
<i>Senna ligustrina</i>	<i>Stillingia aquatica</i>	<i>Utricularia simulans</i>
<i>Senna obtusifolia</i>	<i>Stillingia sylvatica</i>	<i>Utricularia subulata</i>
<i>Senna pendula</i> var. <i>glabrata</i>	<i>Stylosanthes hamata</i> !	<i>Vaccinium darrowii</i>
<i>Serenoa repens</i>	<i>Syagrus romanzoffiana</i>*	<i>Vaccinium myrsinites</i>
<i>Sesbania herbacea</i>	<i>Syngonium angustatum!</i>	<i>Vanilla phaeantha</i>
<i>Sesbania vesicaria</i>	<i>Syngonium podophyllum</i>	<i>Verbena bonariensis</i>
✓ <i>Sesuvium portulacastrum</i>	<i>Syzygium cumini</i>	<i>Verbena scabra!</i>
<i>Setaria corrugata</i>	<i>Syzygium jambos</i>	<i>Verbesina virginica</i>
<i>Setaria magna</i>	<i>Tabebuia aurea</i>	<i>Vernonia blodgettii</i>
<i>Setaria parviflora</i>	<i>Taxodium ascendens</i>	<i>Viburnum obovatum</i>
<i>Seymeria pectinata</i>	<i>Taxodium distichum</i>	<i>Vicia acutifolia</i>
<i>Sida acuta</i>	<i>Tectaria heracleifolia</i>	<i>Vigna luteola</i>
<i>Sida cordifolia</i>	<i>Tephrosia spicata!</i>	<i>Viola lanceolata</i>
<i>Sida elliotii</i>	<i>Teucrium canadense</i>	<i>Viola sororia</i> *!
<i>Sida rhombifolia</i>	<i>Thalia geniculata</i>	<i>Vitis aestivalis</i>
<i>Sideroxylon foetidissimum</i>	<i>Thelypteris dentata</i>*	<i>Vitis cinerea</i> var. <i>floridana</i>
<i>Sideroxylon reclinatum</i> ssp. <i>reclinatum</i>	<i>Thelypteris hispidula</i> var. <i>versicolor</i>	<i>Vitis rotundifolia</i>
<i>Sideroxylon salicifolium</i>	<i>Thelypteris interrupta</i>	<i>Vitis shuttleworthii</i>

✓ *Sideroxylon celastrolum*

✓ *Sporobolus virginicus*

WRITE IN RAIN

Big Cypress NP Data Sheets			
Date:			
County:			
Region:			
Cell #		Point #	289
Transect #1			
Heading (deg.):	265°		
Origin coordinates:	468 426	286 1561	± 8m
End coordinates:	468 207	286 1455	
Species on line	Sparbake Sesuvium Nitroli Rhizomay Succula M. Rascon P. S. Ag. Hippo volu Sol. V. semp Conoclin M. uicid Eleo ced Ole. S. S. P. S. Pala Poxl radi Ble. S. S. C. S. S. Rap. alunc E. uge laxi		
Quad. 2.5 m Intercept 1 (2.5)	—		
Quad. 2.5 m Intercept 2 (5)	Sparbake		
Quad. 2.5 m Intercept 3 (7.5)	Sparbake		
Quad. 2.5 m Intercept 4 (10)	Sparbake		
Quad. 2.5 m Intercept 5 (12.5)	Rhizomay		
Quad. 2.5 m Intercept 6 (15)	—		
Quad. 2.5 m Intercept 7 (17.5)	—		
Quad. 2.5 m Intercept 8 (20)	Rhizomay	Sparbake	
Quad. 2.5 m Intercept 9 (22.5)	Sparbake		

win

Quad. 2.5 m Intercept10 (25)	Sparbake			
Quad. 2.5 m Intercept11 (27.5)	Sparbake			
Quad. 2.5 m Intercept12 (30)	Sparbake	Rhiz mang		
Quad. 2.5 m Intercept13 (32.5)	—			
Quad. 2.5 m Intercept14 (35)	Cladjama			
Quad. 2.5 m Intercept15 (37.5)	Cladjama	Sparbake		
Quad. 2.5 m Intercept16 (40)	Cladjama			
Quad. 2.5 m Intercept17 (42.5)	Sparbake			
Quad. 2.5 m Intercept18 (45)	Rhiz mang			
Quad. 2.5 m Intercept19 (47.5)	Sparbake	Hippolyta		
Quad. 2.5 m Intercept20 (50)	Sparbake			
Quad. 2.5 m Intercept21 (2.5)	—			
Quad. 2.5 m Intercept22 (5)	Sparbake			
Quad. 2.5 m Intercept23 (7.5)	Cladjama			
Quad. 2.5 m Intercept24 (10)	Cladjama			
Quad. 2.5 m Intercept25 (12.5)	Cladjama	Sparbake		
Quad. 2.5 m Intercept26 (15)	Utri Soti			
Quad. 2.5 m Intercept27 (17.5)	—			
Quad. 2.5 m Intercept28 (20)	—			
Quad. 2.5 m Intercept29 (22.5)	Rhiz mang			
Quad. 2.5 m Intercept30 (25)	—			
Quad. 2.5 m Intercept31 (27.5)	Cladjama	Ipon sari		
Quad. 2.5 m Intercept32 (30)	Soti Seling			
Quad. 2.5 m Intercept33 (32.5)	Sparbake	Rhiz mang		

win

Quad. 2.5 m Intercept34 (35)	Sparbake			
Quad. 2.5 m Intercept35 (37.5)	Sparbake			
Quad. 2.5 m Intercept36 (40)	Cladonia			
Quad. 2.5 m Intercept37 (42.5)	Sparbake			
Quad. 2.5 m Intercept38 (45)	—			
Quad. 2.5 m Intercept39 (47.5)	✓			
Quad. 2.5 m Intercept40 (50)	Rhizomang			
Quad. 2.5 m Intercept41 (2.5)	Rhizomang	Cladonia		
Quad. 2.5 m Intercept42 (5)	Rhizomang			
Quad. 2.5 m Intercept43 (7.5)	—			
Quad. 2.5 m Intercept44 (10)	—			
Quad. 2.5 m Intercept45 (12.5)	—			
Quad. 2.5 m Intercept46 (15)	Rhizomang			
Quad. 2.5 m Intercept47 (17.5)	Rhizomang	peridly		
Quad. 2.5 m Intercept48 (20)	Sarcclan	Rhizomang	Sparbake	
Quad. 2.5 m Intercept49 (22.5)	Cladonia	Rhizomang	Mycicium	
Quad. 2.5 m Intercept50 (25)	Sparbake			
Quad. 2.5 m Intercept51 (27.5)	Sparbake			
Quad. 2.5 m Intercept52 (30)	Sparbake			
Quad. 2.5 m Intercept53 (32.5)	—			
Quad. 2.5 m Intercept54 (35)	—			
Quad. 2.5 m Intercept55 (37.5)	Sparbake			
Quad. 2.5 m Intercept56 (40)	Sparbake			
Quad. 2.5 m Intercept57 (42.5)	—			

WIK

Quad. 2.5 m Intercept58 (45)	—				
Quad. 2.5 m Intercept59 (47.5)	—				
Quad. 2.5 m Intercept60 (50)	—				
Quad. 2.5 m Intercept61 (2.5)	—				
Quad. 2.5 m Intercept62 (5)	—				
Quad. 2.5 m Intercept63 (7.5)	Sparbake				
Quad. 2.5 m Intercept64 (10)	—				
Quad. 2.5 m Intercept65 (12.5)	Eleo cell				
Quad. 2.5 m Intercept66 (15)	Eleo cell				
Quad. 2.5 m Intercept67 (17.5)	—				
Quad. 2.5 m Intercept68 (20)	—				
Quad. 2.5 m Intercept69 (22.5)	—				
Quad. 2.5 m Intercept70 (25)	—				
Quad. 2.5 m Intercept71 (27.5)	Sesuport				
Quad. 2.5 m Intercept72 (30)	—				
Quad. 2.5 m Intercept73 (32.5)	—				
Quad. 2.5 m Intercept74 (35)	—				
Quad. 2.5 m Intercept75 (37.5)	—				
Quad. 2.5 m Intercept76 (40)	Sparbake				
Quad. 2.5 m Intercept77 (42.5)	Sparbake Cladjama				
Quad. 2.5 m Intercept78 (45)	Cladjama				
Quad. 2.5 m Intercept79 (47.5)	—				
Quad. 2.5 m Intercept80 (50)	—				
Quad. 2.5 m Intercept81 (2.5)	Alip vola Myciusi				

W12

Quad. 2.5 m Intercept82 (5)	Nysi ceri	Hippuolu	Puccin		
Quad. 2.5 m Intercept83 (7.5)	Rhizman	Blecken			
Quad. 2.5 m Intercept84 (10)	Hippuolu	Toxiradi	Blecken		
Quad. 2.5 m Intercept85 (12.5)	Rapayore	Hippuolu	Blecken		
Quad. 2.5 m Intercept86 (15)	Puccin	Blecken			
Quad. 2.5 m Intercept87 (17.5)	Succelan	Blecken	Rhizman		
Quad. 2.5 m Intercept88 (20)	Rhizman				
Quad. 2.5 m Intercept89 (22.5)	Cohore				
Quad. 2.5 m Intercept90 (25)	Cohore				
Quad. 2.5 m Intercept91 (27.5)	Cohore				
Quad. 2.5 m Intercept92 (30)	Cohore				
Quad. 2.5 m Intercept93 (32.5)	—				
Quad. 2.5 m Intercept94 (35)	—				
Quad. 2.5 m Intercept95 (37.5)	—				
Quad. 2.5 m Intercept96 (40)	—				
Quad. 2.5 m Intercept97 (42.5)	—				
Quad. 2.5 m Intercept98 (45)	—				
Quad. 2.5 m Intercept99 (47.5)	—				
Quad. 2.5 m Intercept100 (50)	—				

Look

WIR

Big Cypress NP Data Sheets					
Date:					
County:					
Region:					
Cell #			Point #		
Transect #2					
Heading (deg.):					
Origin coordinates:	468 428	2861500			
End coordinates:	468 297	28601876		2 (on)	
Species on line	Sparbake Rhizomang Nitridoli Sesuport Side clay Ebn coal Sporing Lumpy met Iron sand Solisomp				
Quad. 2.5 m Intercept 1 (2.5)	—				
Quad. 2.5 m Intercept 2 (5)	—				
Quad. 2.5 m Intercept 3 (7.5)	—				
Quad. 2.5 m Intercept 4 (10)	Sesuport				
Quad. 2.5 m Intercept 5 (12.5)	—				
Quad. 2.5 m Intercept 6 (15)	—				
Quad. 2.5 m Intercept 7 (17.5)	Sparbake				
Quad. 2.5 m Intercept 8 (20)	—				
Quad. 2.5 m Intercept 9 (22.5)	Sesuport				

win

Quad. 2.5 m Intercept10 (25)	—			
Quad. 2.5 m Intercept11 (27.5)	Rhizomang			
Quad. 2.5 m Intercept12 (30)	Saccilar	Rhizomang	Sesuport	
Quad. 2.5 m Intercept13 (32.5)	—			
Quad. 2.5 m Intercept14 (35)	—			
Quad. 2.5 m Intercept15 (37.5)	Sesuport			
Quad. 2.5 m Intercept16 (40)	—			
Quad. 2.5 m Intercept17 (42.5)	—			
Quad. 2.5 m Intercept18 (45)	—			
Quad. 2.5 m Intercept19 (47.5)	—			
Quad. 2.5 m Intercept20 (50)	—			
Quad. 2.5 m Intercept21 (2.5)	—			
Quad. 2.5 m Intercept22 (5)	—			
Quad. 2.5 m Intercept23 (7.5)	Rhizomang	MM	Rhizomang	
Quad. 2.5 m Intercept24 (10)	Rhizomang	Sparbake		
Quad. 2.5 m Intercept25 (12.5)	Rhizomang	Sparbake		
Quad. 2.5 m Intercept26 (15)	Sporulog	Sesuport		
Quad. 2.5 m Intercept27 (17.5)	—			
Quad. 2.5 m Intercept28 (20)	—			
Quad. 2.5 m Intercept29 (22.5)	—			
Quad. 2.5 m Intercept30 (25)	—			
Quad. 2.5 m Intercept31 (27.5)	—			
Quad. 2.5 m Intercept32 (30)	—			
Quad. 2.5 m Intercept33 (32.5)	—			

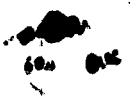
W1R

Quad. 2.5 m Intercept34 (35)	—			
Quad. 2.5 m Intercept35 (37.5)	—			
Quad. 2.5 m Intercept36 (40)	—			
Quad. 2.5 m Intercept37 (42.5)	—			
Quad. 2.5 m Intercept38 (45)	Eleocell			
Quad. 2.5 m Intercept39 (47.5)	—			
Quad. 2.5 m Intercept40 (50)	Sisypoct			
Quad. 2.5 m Intercept41 (2.5)	Sisypoct			
Quad. 2.5 m Intercept42 (5)	Sisypoct			
Quad. 2.5 m Intercept43 (7.5)	Eleocell			
Quad. 2.5 m Intercept44 (10)	—			
Quad. 2.5 m Intercept45 (12.5)	—			
Quad. 2.5 m Intercept46 (15)	—			
Quad. 2.5 m Intercept47 (17.5)	Eleocell			
Quad. 2.5 m Intercept48 (20)	—			
Quad. 2.5 m Intercept49 (22.5)	Eleocell			
Quad. 2.5 m Intercept50 (25)	Rhizmanj	Spasbake		
Quad. 2.5 m Intercept51 (27.5)	Rhizmanj	Spasbake		
Quad. 2.5 m Intercept52 (30)	Eleocell			
Quad. 2.5 m Intercept53 (32.5)	Rhizmanj	Spasbake		
Quad. 2.5 m Intercept54 (35)	Ipmsaji	Spasbake		
Quad. 2.5 m Intercept55 (37.5)	Rhizmanj	Spasbake	Sisypoct	
Quad. 2.5 m Intercept56 (40)	—			
Quad. 2.5 m Intercept57 (42.5)	—			

w 12

Quad. 2.5 m Intercept58 (45)	Elec cell			
Quad. 2.5 m Intercept59 (47.5)	Elec cell			
Quad. 2.5 m Intercept60 (50)	—			
Quad. 2.5 m Intercept61 (2.5)	Elec cell			
Quad. 2.5 m Intercept62 (5)	Elec cell			
Quad. 2.5 m Intercept63 (7.5)	—			
Quad. 2.5 m Intercept64 (10)	—			
Quad. 2.5 m Intercept65 (12.5)	—			
Quad. 2.5 m Intercept66 (15)	—			
Quad. 2.5 m Intercept67 (17.5)	—			
Quad. 2.5 m Intercept68 (20)	—			
Quad. 2.5 m Intercept69 (22.5)	—			
Quad. 2.5 m Intercept70 (25)	—			
Quad. 2.5 m Intercept71 (27.5)	—			
Quad. 2.5 m Intercept72 (30)	—			
Quad. 2.5 m Intercept73 (32.5)	—			
Quad. 2.5 m Intercept74 (35)	Sparbake			
Quad. 2.5 m Intercept75 (37.5)	Sparbake Sesuport			
Quad. 2.5 m Intercept76 (40)	—			
Quad. 2.5 m Intercept77 (42.5)	Sparbake			
Quad. 2.5 m Intercept78 (45)	Sesuport			
Quad. 2.5 m Intercept79 (47.5)	Sparbake			
Quad. 2.5 m Intercept80 (50)	Sparbake			
Quad. 2.5 m Intercept81 (2.5)	—			

WIR



Quad. 2.5 m Intercept82 (5)	—				
Quad. 2.5 m Intercept83 (7.5)	—				
Quad. 2.5 m Intercept84 (10)	—				
Quad. 2.5 m Intercept85 (12.5)	—				
Quad. 2.5 m Intercept86 (15)	Cladysoma				
Quad. 2.5 m Intercept87 (17.5)	Seisipora				
Quad. 2.5 m Intercept88 (20)	—				
Quad. 2.5 m Intercept89 (22.5)	—				
Quad. 2.5 m Intercept90 (25)	—				
Quad. 2.5 m Intercept91 (27.5)	—				
Quad. 2.5 m Intercept92 (30)	Spirorbis Seisipora				
Quad. 2.5 m Intercept93 (32.5)	Spirorbis				
Quad. 2.5 m Intercept94 (35)	Sporosira				
Quad. 2.5 m Intercept95 (37.5)	Spirorbis				
Quad. 2.5 m Intercept96 (40)	Spirorbis				
Quad. 2.5 m Intercept97 (42.5)	Spirorbis				
Quad. 2.5 m Intercept98 (45)	Spirorbis				
Quad. 2.5 m Intercept99 (47.5)	—				
Quad. 2.5 m Intercept100 (50)	—				