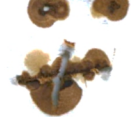


Tenn. data ent for



RefID #34983

K.A. Bradley and M. Abdo. 2003. Observations of vascular plants at Big Cypress National Preserve, cell #AP59, Monroe County, Florida. 7 March 2003. The Institute for Regional Conservation, Miami, FL.

SiteRefID	Site Name
47594	Big Cypress National Preserve Cell #AP59
47595	Big Cypress National Preserve

220
380

Plants of Big Cypress based on Muss et al. (2002)			
CELL AP59	Point # 95	Asclepias lanceolata	Caperonia castaneifolia
Date: 3/7/03	Observers: KB, MA	Asclepias longifolia	Capparis flexuosa
Abrus precatorius		Asclepias tuberosa	Capraria biflora
Abutilon permolle		Asclepias verticillata	Cardiospermum corindum
Acacia pinetorum		Asimina reticulata	Cardiospermum microcarpum
Acalypha gracilens		Asplenium serratum	Carex gigantea!
Acalypha ostryifolia		Aster adnatus	Carex longii*!
✓ Acer rubrum		✓ Aster bracei	Carex lupuliformis
Acmella oppositifolia var. repens		✓ Aster carolinianus	Carex vexans !
Acoelorrhapha wrightii		Aster concolor	Carica papaya
Acrostichum danaeifolium!		Aster dumosus	Carphephorus corymbosus
Adiantum capillus-veneris*		Aster elliotii	Carphephorus odoratissimus
Adiantum tenerum*		✓ Aster subulatus	Caryota mitis
Aeschynomene americana		Avicennia germinans	✓ Cassytha filiformis
Aeschynomene pratensis!		Axonopus compressus*	Casuarina equisetifolia
Agalinis fasciculata		Axonopus fissifolius*!	Casuarina glauca
Agalinis filifolia		Axonopus furcatus	Catharanthus roseus
Agalinis linifolia		Azolla caroliniana	Catopsis berteroniana
Agalinis linifolia		Baccharis angustifolia	Catopsis floribunda
Agalinis maritima		Baccharis glomeruliflora	Celtis laevigata
Ageratina jucunda		Baccharis halimifolia	Cenchrus gracillimus*!
Albizia lebbbeck		✓ Bacopa caroliniana	Cenchrus incertus
Aletris bracteata		Bacopa monnieri	✓ Centella asiatica
✓ Aletris lutea		Bartonia paniculata	Centrosema virginianum
Alpinia zerumbet		Bauhinia purpurea	Cephalanthus occidentalis
Alysicarpus ovalifolius		Bauhinia variegata	Ceratophyllum demersum
Alysicarpus vaginalis		Bejaria racemosa	Ceratopteris thalictroides
Amaranthus australis		✓ Berchemia scandens	Chamaecrista fasciculata
Amaranthus viridis*		Bidens alba var. radiata	Chamaecrista nictitans var. aspera
Ambrosia artemisiifolia		Bigelovia nudata subsp. australis	Chamaesyce blodgettii
Ammannia latifolia		Bischofia javanica	Chamaesyce conferta!
Amorpha fruticosa		✓ Blechnum serrulatum	Chamaesyce hirta
Amorpha herbacea		Blechnum pyramidatum	Chamaesyce hypericifolia
Ampelopsis arborea		Bletia purpurea	Chamaesyce hyssopifolia
Amphicarpum muhlenbergianum		✓ Boehmeria cylindrica	Chamaesyce lasiocarpa
Amyris elemifera		Boerhavia diffusa	Chamaesyce mendezii
Andropogon glomeratus var. glaucopsis*		Boltonia diffusa	Chamaesyce ophthalmica
Andropogon glomeratus var. hirsutior		Bothriochloa ischaemum var. songarica!	Chamaesyce pergamena
Andropogon glomeratus var. pumilus		Bothriochloa pertusa	Chamaesyce porteriiana
Andropogon gyrans		Brassica rapa	Chaptalia tomentosa
Andropogon longiberbis		Buchnera americana	Chiococca alba
Andropogon ternarius		Bucida buceras	✓ Chiococca parvifolia
Andropogon virginicus		Bulbostylis ciliatifolia	✓ Chrysobalanus icaco
Andropogon virginicus var. decipiens		Bulbostylis stenophylla	Chrysophyllum oliviforme
✓ Andropogon virginicus var. glaucus		Burmannia capitata	Chrysopogon pauciflorus
Anemia adiantifolia		Burmannia flava	Chrysopsis subulata
Angadenia berteroi		Bursera simaruba	✓ Cirsium horridulum
✓ Annona glabra		Caesalpinia bonduc	Cirsium nuttallii
Apios americana		Calliandra haematocephala	Cissus verticillata
Apteria aphylla *!		Callicarpa americana	Citharexylum spinosum
Ardisia escallonioides		Calopogon multiflorus!	Citrus aurantium
Argemone mexicana		✓ Calopogon tuberosus!	Citrus limon
Aristida beyrichiana		Calyptranthes pallens!	Citrus sinensis
Aristida patula		Calystegia sepium subsp. limnophila	Citrus xparadisi
✓ Aristida purpurascens		Campanula floridana	✓ Cladium jamaicense
Aristida spiciformis		Campsis radicans	Clematis baldwinii
Arnoglossum ovatum		Campylocentrum pachyrrhizum	Clitoria mariana
Arundo donax		Campyloneurum angustifolium*	Cnidocolus stimulosus
Asclepias curassavica		✓ Campyloneurum phyllitidis <i>shrap fern</i>	Coccoloba diversifolia!
Asclepias incarnata!		Canna flaccida	Codiaeum variegatum var. pictum

Coelorachis rugosa	✓ Dichantherium erectifolium	Erigeron vernus
Coleus pumilus	Dichantherium ovale	Eriobotrya japonica
Colocasia esculenta	Dichantherium portoricense	Eriocaulon compressum
Colubrina arborescens	Dichantherium strigosum var. glabrescens	Eriocaulon decangulare
Commelina diffusa var. diffusa	Dichantherium aristatum*!	Eriocaulon ravenelii !
Commelina erecta	Dichondra carolinensis	Eriochloa michauxii var. michauxii*
Conocarpus erectus	Dichondra micrantha	Erucastrum gallicum
✓ Conoclinium coelestinum	Dicliptera sexangularis	Eryngium baldwinii
Conyza canadensis var. pusilla	Digitaria ciliaris *!	Eryngium yuccifolium
Corchorus hirtus*	Digitaria filiformis var. filiformis !	Erythrina herbacea
Corchorus siliquosus	Digitaria longiflora	Erythrodes querceticola
Cordia globosa	Digitaria violascens!	Eugenia axillaris
✓ Coreopsis leavenworthii	Diodia virginiana	Eugenia uniflora
✓ Cornus foemina	Dioscorea bulbifera	Eulophia alta
✓ Crinum americanum	Dioscorea sansibarensis	Eupatorium capillifolium
Crotalaria lanceolata	Diospyros virginiana	✓ Eupatorium leptophyllum
Crotalaria pallida var. obovata	Dodonaea angustifolia	✓ Eupatorium mikanioides
Crotalaria pumila*!	Drosera brevifolia	Eupatorium mohrii
Crotalaria rotundifolia	Drosera capillaris	✓ Eupatorium rotundifolium
Crotalaria spectabilis	Drymaria cordata*!	Eupatorium serotinum
Croton glandulosus var. glandulosus *!	Drypetes lateriflora	Euphorbia polyphylla
Croton humilis	✓ Dyschoriste angusta	Eustachys glauca
Ctenitis sloanei	Dyschoriste oblongifolia*!	Eustachys petraea
Cuphea carthagenensis	Echinochloa colona	Eustoma exaltatum
Cuscuta pentagona	Echinochloa crus-galli	Euthamia caroliniana
Cynanchum blodgettii	Echinochloa muricata!	Evolvulus alsinoides*!
Cynanchum scoparium	Echinochloa paludigena	✓ Evolvulus sericeus
Cynodon dactylon!	Echinochloa walteri	✓ Exothea paniculata
Cyperus articulatus	Echinodorus berteroi	✓ Ficus aurea!
Cyperus compressus	Eclipta prostrata	Ficus citrifolia
Cyperus croceus	Eichhornia crassipes	Fimbristylis autumnalis
Cyperus distinctus	Eleocharis alba	Fimbristylis caroliniana
Cyperus esculentus	Eleocharis atropurpurea	Fimbristylis cymosa
Cyperus flavescens	Eleocharis baldwinii!	Fimbristylis schoenoides
✓ Cyperus haspan	Eleocharis cellulosa	Fimbristylis spadicea!
Cyperus involucreatus	Eleocharis elongata	✓ Flaveria linearis
Cyperus ligularis	Eleocharis flavescens	Forestiera segregata
Cyperus odoratus	Eleocharis geniculata	Fraxinus caroliniana
Cyperus planifolius	Eleocharis interstincta	✓ Fuirena breviseta
Cyperus polystachyos!	Elephantopus elatus	Fuirena scirpoidea
Cyperus pumilus	Eleusine indica	Furcraea selloa
Cyperus retrorsus	Elionurus tripsacoides	Galactia eliottii
Cyperus surinamensis	✓ Elytraria carolinensis var. angustifolia	Galactia regularis
Cyperus tetragonus*!	Emilia fosbergii*!	Galactia striata
Cyrtopodium punctatum	Encyclia cochleata	Galactia volubilis
Dactyloctenium aegyptium	✓ Encyclia tampensis	Galium hispidulum
Dalbergia sissoo	Epidendrum anceps	Gaura angustifolia
Dalea carnea	Epidendrum floridense	Glandularia maritima
Dalea carthagenensis var. floridana	Epidendrum nocturnum	Gnaphalium falcatum!
Desmodium floridanum	✓ Epidendrum rigidum	Gnaphalium obtusifolium
Desmodium incanum	Equisetum hyemale var. affine	Gnaphalium pennsylvanicum
Desmodium paniculatum	Eragrostis atrovirens!	Gnaphalium purpureum
Desmodium tortuosum	Eragrostis bahiensis	Gomphrena serrata
Desmodium triflorum	Eragrostis ciliaris	Gouania lupuloides
Desmodium viridiflorum	✓ Eragrostis eliottii	✓ Gratiola ramosa
✓ Dichantherium aciculare	Eragrostis hypnoides*!	Grevillea robusta
✓ Dichantherium commutatum	Eragrostis spectabilis	Guzmania monostachia
✓ Dichantherium dichotomum	✓ Erechtites hieracifolia	Gymnopogon brevifolius
Dichantherium erisifolium	✓ Eremochloa ophiuroides	Gymnopogon chapmanianus
Dichantherium ensifolium var. unciphyllum!	✓ Erigeron quercifolius	Habenaria floribunda

Habenaria nivea	Juncus repens	✓	Magnolia virginiana
Habenaria quinqueseta	Juncus roemerianus		Malachra urens
Habenaria repens	Juncus trigonocarpus		Malaxis spicata
Hamelia patens	✓ Justicia angusta!		Malvaviscus arboreus var. drummondii
Harrisella filiformis	Kalanchoe pinnata		Mangifera indica
Hedyotis procumbens !	Kalanchoe tubiflora		Maxillaria crassifolia
Hedyotis uniflora	Kigelia pinnata		Mecardonia acuminata subsp. peninsularis
Helenium amarum	✓ Kosteletzkya virginica		Mecardonia procumbens!
✓ Helenium pinnatifidum	Krugiodendron ferreum		Medicago lupulina*!
Helianthus angustifolius	Kyllinga brevifolia		Melaleuca quinquenervia
Helianthus radula	Lachnocaulon anceps		Melaleuca viminalis
✓ Heliotropium polyphyllum	Laguncularia racemosa		Melanthera angustifolia!
Heteropogon contortus	Lantana camara		Melanthera parvifolia
Heteropogon melanocarpus	Lantana depressa var. sanibelensis!		Melanthera nivea
Heterotheca subaxillaris	Lantana involucrata		Melilotus albus
✓ Hibiscus grandiflorus !	Lasiacis divaricata		Melochia pyramidata
Hibiscus poeppigii	Leersia hexandra		Melochia spicata
Hibiscus rosa-sinensis var. schizopetalus	Lemna obscura		Melothria pendula
Hibiscus tiliaceus	Lepidium virginicum		Metopium toxiferum
Hippocratea volubilis	Leptochloa fascicularis!		Micranthemum glomeratum
Hydrilla verticillata	Leucaena leucocephala		Microgramma heterophylla
Hydrocotyle bonariensis	Liatris garberi		Mikania cordifolia
Hydrocotyle umbellata	Liatris gracilis	✓	Mikania scandens
Hydrocotyle verticillata	Liatris graminifolia	✓	Mitreola petiolata
✓ Hydrolea corymbosa	Liatris pauciflora		Mitreola sessilifolia
✓ Hymenocallis palmeri	Liatris spicata		Monanthochloe littoralis
Hyparrhenia rufa	Licania michauxii		Morus alba
✓ Hypericum brachyphyllum!	Lilium catesbaei		Morus rubra
Hypericum cistifolium	Limnophila sessiliflora		Mucuna pruriens *
Hypericum crux-andreae!	Lindernia hustaceae	✓	Muhlenbergia capillaris
✓ Hypericum hypericoides	Lindernia dubia var. anagallidea		Murdannia nudiflora
Hypericum tetrapetalum	Lindernia grandiflora		Murdannia spirata
Hypoxis juncea	Linum carteri var. smallii		Musa xparadisica
Hypoxis wrightii	Linum floridanum		Myrcianthes fragrans
✓ Hyptis alata	Linum medium var. texanum!	✓	Myrica cerifera
Hyptis mutabilis	Liparis nervosa		Myriophyllum aquaticum
Hyptis pectinata	Lobelia feayana		Myriophyllum heterophyllum
Hyptis verticillata	Lobelia glandulosa		Myriophyllum pinnatum
✓ Ilex cassine!	Lobelia homophylla		Najas guadalupensis
Ilex glabra	Lobelia paludosa !		Najas marina
Imperata brasiliensis	✓ Ludwigia alata!		Najas wrightiana
Imperata cylindrica	Ludwigia curtissii	✓	Nelumbo lutea
Indigofera spicata	Ludwigia erecta	✓	Nephrolepis biserrata
Ionopsis utricularioides	Ludwigia maritima	✓	Nephrolepis exaltata
Ipomoea alba	✓ Ludwigia microcarpa	✓	Nephrolepis multiflora!
Ipomoea batatas	Ludwigia octovalvis		Neyraudia reynaudiana
Ipomoea cordatotriloba	Ludwigia peruviana		Nicotiana tabacum
Ipomoea indica var. acuminata	✓ Ludwigia repens !		Nuphar lutea subsp. advena
✓ Ipomoea sagittata	Ludwigia suffruticosa		Nymphaea elegans
Ipomoea triloba	Lycium carolinianum		Nymphaea lotus
Iresine diffusa	Lycopus rubellus		Nymphaea odorata
Iris hexagona	Lygodium microphyllum		Nymphoides aquatica
Isoetes flaccida	Lyonia fruticosa		Ocimum campechianum
✓ Iva microcephala	Lyonia lucida		Ocotea coriacea
Ixora coccinea	Lysiloma latisiliquum		Oeceoclades maculata
Jacquemontia curtisii	Lythrum alatum var. lanceolatum		Oenothera humifusa
Jacquemontia pentanthos	Lythrum lineare		Ophioglossum palmatum
Juncus marginatus	Macropitilium atropurpureum		Ophioglossum petiolatum
✓ Juncus megacephalus	Macropitilium lathyroides		Oplismenus hirtellus
Juncus polycephalus	Magnolia grandiflora		Opuntia humifusa

Osmunda regalis var. spectabilis		Pinguicula lutea	✓	Quercus virginiana
Oxalis corniculata	✓	Pinguicula pumila		Randia aculeata
Oxypolis filiformis		Pinus elliottii var. densa	✓	Rapanea punctata
Palafoxia feayi		Piper aduncum		Reimarochloa oligostachya
Panicum dichotomiflorum	✓	Piriqueta caroliniana		Rhabdadenia biflora
Panicum dichotomiflorum var. bartowense		Pisonia aculeata		Rhapis excelsa
✓ Panicum hemitomon		Pistia stratiotes		Rhexia cubensis
Panicum hians!		Pithecellobium unguis-cati		Rhexia mariana!
Panicum repens		Pityopsis graminifolia		Rhexia nashii
Panicum rigidulum		Pityrogramma trifoliata		Rhexia nuttallii
✓ Panicum tenerum		Plantago major!		Rhizophora mangle
✓ Panicum virgatum	✓	Pleopeltis polyodioides var. michauxiana ^{less fern}		Rhus copallinum
Parietaria floridana		Pluchea carolinensis		Rhynchelytrum repens
✓ Parthenocissus quinquefolia		Pluchea odorata	✓	Rhynchosia minima
✓ Paspalidium geminatum!	✓	Pluchea rosea		Rhynchospora breviseta
Paspalum blodgettii		Plumbago scandens		Rhynchospora chapmanii
Paspalum caespitosum		Poinsettia heterophylla	✓	Rhynchospora colorata
Paspalum conjugatum!		Polygala baldunii		Rhynchospora comiculata!
Paspalum distichum	✓	Polygala boykinii	✓	Rhynchospora divergens
Paspalum fimbriatum		Polygala cruciata		Rhynchospora fascicularis
Paspalum floridanum!	✓	Polygala grandiflora		Rhynchospora globularis
✓ Paspalum monostachyum		Polygala incarnata		Rhynchospora intermedia
Paspalum notatum		Polygala lutea		Rhynchospora inundata
Paspalum praecox*!		Polygala nana	✓	Rhynchospora microcarpa!
Paspalum repens		Polygala polygama	✓	Rhynchospora miliacea
Paspalum setaceum		Polygala rugelii		Rhynchospora nitens
Paspalum urvillei!		Polygala setacea		Rhynchospora odorata
Passiflora pallens		Polygala verticillata var. isocycla*!		Rhynchospora tracyi
Passiflora suberosa		Polygonum densiflorum		Richardia grandiflora
Pectis glaucescens	✓	Polygonum hydropiperoides!		Richardia scabra
Pectis prostrata		Polygonum punctatum		Ricinus communis
Pectis xfloridana*!		Polygonum setaceum		Rivina humilis
✓ Peltandra virginica		Polypremum procumbens		Rorippa teres!
Pennisetum purpureum		Polyradicion lindenii		Rotala ramosior
Penstemon multiflorus		Polystachya concreta		Rottboellia cochinchinensis
Pentalinon luteum		Pongamia pinnata		Roystonea regia
Pentodon pentandrus!	✓	Pontederia cordata		Rubus trivialis
Peperomia alata		Ponthieva racemosa		Rudbeckia hirta
Peperomia glabella		Portulaca oleracea!		Ruellia caroliniensis
Peperomia obtusifolia		Portulaca pilosa		Ruellia succulenta
Peperomia rotundifolia		Portulaca rubraulis		Ruellia tweediana
Persea americana		Potamogeton illinoensis		Rumex verticillatus
Persea borbonia	✓	Proserpinaca palustris		Ruppia maritima
✓ Persea palustris		Pseudelephantopus spicatus *	✓	Sabal palmetto!
Phanopyrum gymnocarpon !*		Psidium guajava		Sabatia bartramii!
Phlebodium aureum	✓	Psilotum nudum		Sabatia brevifolia
Phlox drummondii		Psychotria nervosa		Sabatia calycina
Phoradendron leucarpum	✓	Psychotria sulzneri		Sabatia grandiflora
✓ Phragmites australis	✓	Pteridium aquilinum var. caudatum	✓	Sabatia stellaris
Phyla nodiflora		Pteridium aquilinum var. pseudocaudatum	✓	Saccharum giganteum
Phyla stoechadriifolia*!		Pteris bahamensis		Saccharum officinarum
✓ Phyllanthus caroliniensis subsp. saxicola		Pteris tripartita		Sacciolepis indica
Phyllanthus urinaria		Pteris vittata		Sacciolepis striata
Physalis angustifolia		Pteris xdelchampsii		Sacoila lanceolata
Physalis pubescens		Pterocaulon pycnostachyum		Sageretia minutiflora
Physalis walteri		Ptilimnium capillaceum		Sagittaria filiformis
Physostegia purpurea!		Quercus geminata		Sagittaria graminea!
Phytolacca americana	✓	Quercus laurifolia	✓	Sagittaria graminea var. chapmanii
Pilea microphylla!		Quercus minima!	✓	Sagittaria lancifolia
Piloblephis rigida		Quercus pumila	✓	Salix caroliniana

Salvia lyrata		Solidago sempervirens	✓	Toxicodendron radicans
Salvia occidentalis		Solidago stricta		Tradescantia spathacea
Salvinia minima		Solidago tortifolia!		Tradescantia zebrina
Sambucus canadensis		✓ Spartina bakeri	✓	Trema micranthum
Samolus ebracteatus		Spermacoce assurgens		Trichomanes holopterum
Samolus valerandi subsp. parviflorus		Spermacoce floridana		Trichostema dichotomum
Sansevieria hyacinthoides*		Spermacoce prostrata		Trichostigma octandrum
Sapindus saponaria		Spermacoce terminalis		Tridax procumbens
✓ Sarcostemma clausum		Spermacoce verticillata		Triphora gentianoides
✓ Saururus cernuus <i>lizards tail</i>		Spiranthes brevilabris	✓	Tripsacum dactyloides
Schefflera actinophylla		Spiranthes cernua		Tripsacum floridanum
✓ Schinus terebinthifolius		Spiranthes laciniata		Turbina corymbosa
✓ Schizachyrium rhizomatum		Spiranthes longilabris		✓ Typha domingensis
Schizachyrium sanguineum		Spiranthes odorata		Typha latifolia
Schoenolirion albiflorum		Spiranthes torta		Urena lobata
✓ Schoenus nigricans		Spiranthes vernalis		Urochloa fasciculata var. reticulata
Schoepfia chrysophylloides		Spirodela polyrhiza*!		Urochloa mutica
✓ Scirpus tabernaemontani		Sporobolus domingensis		Urochloa ramosa
Scleria baldwinii		Sporobolus indicus		✓ Utricularia cornuta
Scleria ciliata var. ciliata!		Sporobolus indicus var. pyramidalis		✓ Utricularia foliosa
Scleria georgiana!		Sporobolus junceus		Utricularia gibba
Scleria hirtella !		Sporobolus pyramidatus		Utricularia inflata
Scleria reticularis		Stachytarpheta jamaicensis		Utricularia purpurea
Scleria triglomerata!		Stenandrium dulce		Utricularia radiata
✓ Scleria verticillata		Stenochlaena tenuifolia		Utricularia resupinata
Scoparia dulcis		Stenotaphrum secundatum		Utricularia simulans
Senecio glabellus		Stillingia aquatica		✓ Utricularia subulata
Senna alata		Stillingia sylvatica		Vaccinium darrowii
Senna ligustrina		Stylosanthes hamata !		Vaccinium myrsinites
Senna obtusifolia		Syagrus romanzoffiana *		Vanilla phaeantha
Senna pendula var. glabrata		Syngonium angustatum!		Verbena bonariensis
✓ Serehoa repens		Syngonium podophyllum		Verbena scabra!
Sesbania herbacea		Syzygium cumini		Verbesina virginica
Sesbania vesicaria		Syzygium jambos	✓	Vernonia blodgettii
Sesuvium portulacastrum		Tabebuia aurea		Viburnum obovatum
Setaria corrugata		✓ Taxodium ascendens		Vicia acutifolia
Setaria magna		✓ Taxodium distichum	✓	Vigna luteola
Setaria parviflora		Tectaria heracleifolia		Viola lanceolata
Seymeria pectinata		Tephrosia spicata!		Vitis aestivalis
Sida acuta		Teucrium canadense		Vitis cinerea var. floridana
Sida cordifolia		✓ Thalia geniculata	✓	✓ Vitis rotundifolia
Sida elliotii		Thelypteris hispidula var. versicolor		Vitis shuttleworthii
Sida rhombifolia		Thelypteris interrupta		Vittaria lineata
Sideroxylon foetidissimum	✓	Thelypteris kunthii!		Waltheria indica
Sideroxylon reclinatum ssp. reclinatum		Thelypteris ovata!		Wedelia trilobata
Sideroxylon salicifolium	✓	Thelypteris palustris var. pubescens		Wolffiella oblonga
Simarouba glauca		Thelypteris reticulata		Woodwardia areolata
✓ Sisyrrinchium angustifolium		Tillandsia balbisiana	✓	✓ Woodwardia virginica
Sisyrrinchium rosulatum		✓ Tillandsia fasciculata var. densispica		Ximenia americana
Smilax auriculata		Tillandsia flexuosa		Xyris ambigua
✓ Smilax bona-nox		✓ Tillandsia paucifolia	✓	✓ Xyris difformis var. floridana
✓ Smilax laurifolia		Tillandsia pruinosa		Xyris elliotii
Solanum americanum		✓ Tillandsia recurvata!		Xyris fiabelliformis
Solanum capsicoides*		✓ Tillandsia setacea		Xyris jupicai
Solanum erianthum		✓ Tillandsia usneoides		Youngia japonica
Solanum verbascifolium		✓ Tillandsia utriculata		Zanthoxylum fagara
Solanum viarum		✓ Tillandsia variabilis		Zea mays subsp. mexicana
Solidago fistulosa		Tillandsia xsmalliana		Zephyranthes simpsonii
✓ Solidago gigantea		Tournefortia hirsutissima		Zeuxine strateumatica
Solidago odora var. chapmanii		Tournefortia volubilis		Zizaniopsis miliacea

Big Cypress NP Data Sheets			
Date:	3/7/03		
County:	Monr.		
Region:	Dayhoff Sl.		
Cell #	Point #		
Transect #2			
Heading (deg.):	320°		
Origin coordinates:			
End coordinates:	050268	2846733	
Species on line	Cladonia	Multicapi	Rhymnia
	Taraxac	Ludwigia	Triplex
	Paspalum	Justaugu	Kostviny
	Rhynchos	Vernobol	Salicaria
	Schizanth	Cirsium	Ludwigia
	Cassia	Hymenoc	Amorpha
	Centaurea	Sida palm	Ludwigia
	Ludwigia	Chicory	Polyhydr
	Rhynchos	Dich. Dick	Hibiscus
	Myrica	Polybot	Pterocarp
	persale	Conococ	Bacchar
	Rhynchos	Euphorb	
	Ranunc	Sabal	
	Platan	Sacchar	
	Helian	Helipol	
	Hypochaer	Ranunc	
	Dichere	Solidag	
	Ranunc	Cephael	
	Siderol	Cornu	
Quad. 2.5 m Intercept 1 (2.5)	Schizanth		
Quad. 2.5 m Intercept 2 (5)	Dichere	Taraxac	
Quad. 2.5 m Intercept 3 (7.5)	Cladonia		
	Schizanth		
	Rhynchos		
Quad. 2.5 m Intercept 4 (10)	Rhynchos		
Quad. 2.5 m Intercept 5 (12.5)	Rhynchos		
	Cassia		
Quad. 2.5 m Intercept 6 (15)	Paspalum		
	Ludwigia		
Quad. 2.5 m Intercept 7 (17.5)	Paspalum		
	Rhynchos		
Quad. 2.5 m Intercept 8 (20)	Rhynchos		
	Schizanth		

Quad. 2.5 m Intercept9 (22.5)	Dicherec			
Quad. 2.5 m Intercept10 (25)	Paspalum Ludumier			
Quad. 2.5 m Intercept11 (27.5)	Paspalum Plucma	Ludumier Tatoase		
Quad. 2.5 m Intercept12 (30)	Ludumier Paspalum			
Quad. 2.5 m Intercept13 (32.5)	Ludumier Rhyndie			
Quad. 2.5 m Intercept14 (35)	Ludumier Cladisa			
Quad. 2.5 m Intercept15 (37.5)	Cladisa Sdeverf			
Quad. 2.5 m Intercept16 (40)	Cladisa			
Quad. 2.5 m Intercept17 (42.5)	Ipomisa, Prosalo			
Quad. 2.5 m Intercept18 (45)	Cladisa Saka palm			
Quad. 2.5 m Intercept19 (47.5)	Dich Dich Cladisa	Chiopary		
Quad. 2.5 m Intercept20 (50)	Centasia Cladisa			
Quad. 2.5 m Intercept21 (2.5)	Rhyndie			
Quad. 2.5 m Intercept22 (5)	Paspalo Pdy boyk			
Quad. 2.5 m Intercept23 (7.5)	Rhyndie Pluc			
Quad. 2.5 m Intercept24 (10)	Rhyndie			
Quad. 2.5 m Intercept25 (12.5)	Centasia Tatoase			
Quad. 2.5 m Intercept26 (15)	Couacoel Cladisa	Tatoase		
Quad. 2.5 m Intercept27 (17.5)	Paspalum Centasia			
Quad. 2.5 m Intercept28 (20)	Rhyndie Rhyndie	Cassil.		
Quad. 2.5 m Intercept29 (22.5)	Paspalum Cassil			
Quad. 2.5 m Intercept30 (25)	Schirhiz Rhyndie			
Quad. 2.5 m Intercept31 (27.5)	Schirhiz Hypalal			

Quad. 2.5 m Intercept32 (30)	Conocael Rhyzmicu			
Quad. 2.5 m Intercept33 (32.5)	Conocael Cladione	Schizhiz Causfili		
Quad. 2.5 m Intercept34 (35)	Conocael Schizhiz	DichDich		
Quad. 2.5 m Intercept35 (37.5)	Blesserr Cladione	Perspalo		
Quad. 2.5 m Intercept36 (40)	Blesserr Sapapone	Conocael Taxoore		
Quad. 2.5 m Intercept37 (42.5)	Sabapalm Myricen			
Quad. 2.5 m Intercept38 (45)	Chioparu Cladione			
Quad. 2.5 m Intercept39 (47.5)	Blesserr Sabapalm	Saccgic		
Quad. 2.5 m Intercept40 (50)	Cladione Rhyzmicu			
Quad. 2.5 m Intercept41 (2.5)	Blesserr Cladione	Sabapalm		
Quad. 2.5 m Intercept42 (5)	Cladione Ludwimic			
Quad. 2.5 m Intercept43 (7.5)	Pucore Iponasgi	Cladione		
Quad. 2.5 m Intercept44 (10)	Blesserr Iponasgi	DichDich		
Quad. 2.5 m Intercept45 (12.5)	Saccgic Ludwimic			
Quad. 2.5 m Intercept46 (15)	Myricen Mikassar			
Quad. 2.5 m Intercept47 (17.5)	Mikassar Saccgic			
Quad. 2.5 m Intercept48 (20)	Cophocci Ilexcan			
Quad. 2.5 m Intercept49 (22.5)	Myricen Ilexcan			
Quad. 2.5 m Intercept50 (25)	Smilaur Blesserr	Ilexcan		
Quad. 2.5 m Intercept51 (27.5)	Blesserr Ilexcan			
Quad. 2.5 m Intercept52 (30)	tholkunt Chioparu			
Quad. 2.5 m Intercept53 (32.5)	Ilexcan Blesserr			
Quad. 2.5 m Intercept54 (35)	Chioparu Perspalo			

Quad. 2.5 m Intercept55 (37.5)	Plucma			
Quad. 2.5 m Intercept56 (40)	-			
Quad. 2.5 m Intercept57 (42.5)	-			
Quad. 2.5 m Intercept58 (45)	-			
Quad. 2.5 m Intercept59 (47.5)	-			
Quad. 2.5 m Intercept60 (50)	Ludwalat			
Quad. 2.5 m Intercept61 (2.5)	Beser Papa puc	Salicaria		
Quad. 2.5 m Intercept62 (5)	Cladonia Salicaria	Cephosia		
Quad. 2.5 m Intercept63 (7.5)	Hypotemat Salicaria			
Quad. 2.5 m Intercept64 (10)	Cladonia Salicaria			
Quad. 2.5 m Intercept65 (12.5)	Cladonia			
Quad. 2.5 m Intercept66 (15)	-			
Quad. 2.5 m Intercept67 (17.5)	Cladonia			
Quad. 2.5 m Intercept68 (20)	-			
Quad. 2.5 m Intercept69 (22.5)	Rhytisma			
Quad. 2.5 m Intercept70 (25)	Ludwara			
Quad. 2.5 m Intercept71 (27.5)	Cladonia Ptychod			
Quad. 2.5 m Intercept72 (30)	Cladonia Tuxaria			
Quad. 2.5 m Intercept73 (32.5)	Cladonia			
Quad. 2.5 m Intercept74 (35)	Cladonia			
Quad. 2.5 m Intercept75 (37.5)	Cladonia Cephosia	Salicaria		
Quad. 2.5 m Intercept76 (40)	Cladonia Prosop			
Quad. 2.5 m Intercept77 (42.5)	Cladonia			

Quad. 2.5 m Intercept78 (45)	Cladonia			
Quad. 2.5 m Intercept79 (47.5)	Taraxacum Salicaria			
Quad. 2.5 m Intercept80 (50)	Boehmeria			
Quad. 2.5 m Intercept81 (2.5)	Cladonia Taraxacum			
Quad. 2.5 m Intercept82 (5)	Paspalum Taraxacum			
Quad. 2.5 m Intercept83 (7.5)	Cladonia			
Quad. 2.5 m Intercept84 (10)	Cladonia Taraxacum			
Quad. 2.5 m Intercept85 (12.5)	Taraxacum			
Quad. 2.5 m Intercept86 (15)	—			
Quad. 2.5 m Intercept87 (17.5)	Paspalum Cladonia			
Quad. 2.5 m Intercept88 (20)	Taraxacum			
Quad. 2.5 m Intercept89 (22.5)	Cladonia Taraxacum			
Quad. 2.5 m Intercept90 (25)	Myrica Ilex	Taraxacum		
Quad. 2.5 m Intercept91 (27.5)	Cladonia Taraxacum			
Quad. 2.5 m Intercept92 (30)	Cladonia			
Quad. 2.5 m Intercept93 (32.5)	—			
Quad. 2.5 m Intercept94 (35)	Taraxacum			
Quad. 2.5 m Intercept95 (37.5)	Cladonia			
Quad. 2.5 m Intercept96 (40)	Blechnum Ranunculus	Ilex		
Quad. 2.5 m Intercept97 (42.5)	Coxsackia Myrica			
Quad. 2.5 m Intercept98 (45)	Saururus Cladonia			
Quad. 2.5 m Intercept99 (47.5)	Cladonia Baccharis	Taraxacum		
Quad. 2.5 m Intercept100 (50)	Cladonia			

Big Cypress NP Data Sheets			
Date:	3/7/03		
County:	Monroe		
Region:	Dougherty Slough SW of Raccoon Pt		
Cell #		Point #	95
Transect #1			
Heading (deg.):	220°		
Origin coordinates:			
End coordinates:	2846	0502710	2846351
Species on line	Schizanthus	Panicum	Utricularia
	Paspalum	Barbarea	Utricularia
	Pluchea	Myrica	Anagallis
	Rhynchos	Pennisetum	
	Muhlenbergia	Hypochaeris	
	Sagittaria	Berberis	
	Zosterella	Sagittaria	
	Cassia	Rhynchos	
	Dichroa	Sagittaria	
	Cladonia	Iponisia	
	Flavina	Ileostemum	
	Sisyrinchium	Conoclinium	
	Centaurea	Spartanum	
	Ludwigia	Andropogon	
	Rhynchos	Panicum	
	Setaria	Myrica	
	Brugeria	Euphorbia	
	Helipina	Rubus	
	Dyschisma	Mitella	
Quad. 2.5 m Intercept 1 (2.5)	Schizanthus		
	Cassia		
Quad. 2.5 m Intercept 2 (5)	Dichroa		
	Rhynchos		
Quad. 2.5 m Intercept 3 (7.5)	Rhynchos		
	Schizanthus		
Quad. 2.5 m Intercept 4 (10)	Paspalum		
Quad. 2.5 m Intercept 5 (12.5)	Dyschisma	Paspalum	
	Cassia		
Quad. 2.5 m Intercept 6 (15)	Schizanthus		
Quad. 2.5 m Intercept 7 (17.5)	Panicum		
Quad. 2.5 m Intercept 8 (20)	Rhynchos		

Quad. 2.5 m Intercept9 (22.5)				
Quad. 2.5 m Intercept10 (25)	Paulownia Rhytidia Schiribiz			
Quad. 2.5 m Intercept11 (27.5)	Rhytidia Paspalum	Dyscaeu		
Quad. 2.5 m Intercept12 (30)	Rhytidia			
Quad. 2.5 m Intercept13 (32.5)	—			
Quad. 2.5 m Intercept14 (35)	—			
Quad. 2.5 m Intercept15 (37.5)	Paspalum Rhytidia			
Quad. 2.5 m Intercept16 (40)	Rhytidia			
Quad. 2.5 m Intercept17 (42.5)	Rhytidia Schiribiz			
Quad. 2.5 m Intercept18 (45)	Dyscaeu Cladonia	Rhytidia		
Quad. 2.5 m Intercept19 (47.5)	Rhytidia			
Quad. 2.5 m Intercept20 (50)	Cassia Schiribiz			
Quad. 2.5 m Intercept21 (2.5)	Rhytidia			
Quad. 2.5 m Intercept22 (5)	—			
Quad. 2.5 m Intercept23 (7.5)	Cladonia Schiribiz	Rhytidia		
Quad. 2.5 m Intercept24 (10)	Schiribiz Rhytidia			
Quad. 2.5 m Intercept25 (12.5)	Rhytidia			
Quad. 2.5 m Intercept26 (15)	Cladonia Rhytidia	Centasia		
Quad. 2.5 m Intercept27 (17.5)	Schiribiz Rhytidia			
Quad. 2.5 m Intercept28 (20)	Schiribiz Rhytidia			
Quad. 2.5 m Intercept29 (22.5)	Centasia Cladonia			
Quad. 2.5 m Intercept30 (25)	Schiribiz Paspalum			
Quad. 2.5 m Intercept31 (27.5)	Schiribiz			

Quad. 2.5 m Intercept32 (30)	—			
Quad. 2.5 m Intercept33 (32.5)	Cladonia Rhyndia			
Quad. 2.5 m Intercept34 (35)	Rhymmer Rhyndia			
Quad. 2.5 m Intercept35 (37.5)	Rhyndia Paspuno			
Quad. 2.5 m Intercept36 (40)	Paspuno Auriviglav			
Quad. 2.5 m Intercept37 (42.5)	Puerre Cladonia	Rhyndia		
Quad. 2.5 m Intercept38 (45)	Rhyndia Panivig			
Quad. 2.5 m Intercept39 (47.5)	Dyscaup Paspuno	Rhyndia Cladonia		
Quad. 2.5 m Intercept40 (50)	Paspuno			
Quad. 2.5 m Intercept41 (2.5)	—			
Quad. 2.5 m Intercept42 (5)	Rhyndia			
Quad. 2.5 m Intercept43 (7.5)	Rhyndia Cantaria			
Quad. 2.5 m Intercept44 (10)	Schibiz			
Quad. 2.5 m Intercept45 (12.5)	Schibiz Paspuno	Hymepch		
Quad. 2.5 m Intercept46 (15)	Paspuno Cassili	Dichere Tatoact		
Quad. 2.5 m Intercept47 (17.5)	Rhyndia Schibiz			
Quad. 2.5 m Intercept48 (20)	Cladonia Rhyndia			
Quad. 2.5 m Intercept49 (22.5)	Rhyndia			
Quad. 2.5 m Intercept50 (25)	Cassili Rhyndia	Paspuno		
Quad. 2.5 m Intercept51 (27.5)	Multapi Paspalo			
Quad. 2.5 m Intercept52 (30)	Dichere Paspuno	Rhyndia Schibiz		
Quad. 2.5 m Intercept53 (32.5)	Paspuno Cladonia			
Quad. 2.5 m Intercept54 (35)	Rhymmer Ludumier			

Quad. 2.5 m Intercept55 (37.5)	Rhynchospora			
Quad. 2.5 m Intercept56 (40)	Schirchiz Rhynchospora			
Quad. 2.5 m Intercept57 (42.5)	Schirchiz			
Quad. 2.5 m Intercept58 (45)	Cladonia Rhynchospora			
Quad. 2.5 m Intercept59 (47.5)	Schirchiz Rhynchospora			
Quad. 2.5 m Intercept60 (50)	Rhynchospora Schirchiz			
Quad. 2.5 m Intercept61 (2.5)	Schirchiz Fuirena			
Quad. 2.5 m Intercept62 (5)	Paspalum Taxodium			
Quad. 2.5 m Intercept63 (7.5)	Mikania Paspalum	Cladonia Rhynchospora		
Quad. 2.5 m Intercept64 (10)	Schirchiz Rhynchospora			
Quad. 2.5 m Intercept65 (12.5)	Cladonia Paspalum	Rhynchospora		
Quad. 2.5 m Intercept66 (15)	Dicentra Plocos	Rhynchospora		
Quad. 2.5 m Intercept67 (17.5)	Rhynchospora			
Quad. 2.5 m Intercept68 (20)	Schirchiz Paspalum			
Quad. 2.5 m Intercept69 (22.5)	Schirchiz			
Quad. 2.5 m Intercept70 (25)	Schirchiz			
Quad. 2.5 m Intercept71 (27.5)	Fuirena			
Quad. 2.5 m Intercept72 (30)	Paspalum Paspalum			
Quad. 2.5 m Intercept73 (32.5)	Schirchiz Centropogon			
Quad. 2.5 m Intercept74 (35)	Paspalum Rhynchospora	Schirchiz Cassipourea		
Quad. 2.5 m Intercept75 (37.5)	Schirchiz Rhynchospora			
Quad. 2.5 m Intercept76 (40)	Rhynchospora			
Quad. 2.5 m Intercept77 (42.5)	Paspalum			

Quad. 2.5 m Intercept78 (45)	Paspalum Schirchie	Rhynchos		
Quad. 2.5 m Intercept79 (47.5)	Rhynchos Schirchie			
Quad. 2.5 m Intercept80 (50)	Rhynchos Cladonia			
Quad. 2.5 m Intercept81 (2.5)	Rhynchos			
Quad. 2.5 m Intercept82 (5)	Rhynchos			
Quad. 2.5 m Intercept83 (7.5)	Paspalum			
Quad. 2.5 m Intercept84 (10)	Cladonia			
Quad. 2.5 m Intercept85 (12.5)	Schirchie Rhynchos			
Quad. 2.5 m Intercept86 (15)	Helipium			
Quad. 2.5 m Intercept87 (17.5)	Helipium Paspalum			
Quad. 2.5 m Intercept88 (20)	Sparballe Rhynchos			
Quad. 2.5 m Intercept89 (22.5)	Schirchie Rhynchos			
Quad. 2.5 m Intercept90 (25)	Helipium Cladonia			
Quad. 2.5 m Intercept91 (27.5)	Schirchie Rhynchos			
Quad. 2.5 m Intercept92 (30)	Rhynchos			
Quad. 2.5 m Intercept93 (32.5)	Schirchie			
Quad. 2.5 m Intercept94 (35)	Schirchie			
Quad. 2.5 m Intercept95 (37.5)	Paspalum			
Quad. 2.5 m Intercept96 (40)	Schirchie Paspalum			
Quad. 2.5 m Intercept97 (42.5)	Cladonia			
Quad. 2.5 m Intercept98 (45)	Rhynchos Paspalum			
Quad. 2.5 m Intercept99 (47.5)	Eragalli			
Quad. 2.5 m Intercept100 (50)	Paspalum			