

Data entered by: J. W. W. 02/02/02

Ref ID# 23892

Bradley, K.A., and S.W. Woodmansee. 2001. Observations of vascular plants at Biscayne National Park [Mainland Section] Cell#85, Miami-Dade County, Florida. 1 November 2001. The Institute for Regional Conservation, Miami, FL.

Site Ref ID#

21687

21688

Site Name

Biscayne National Park [Mainland Section] Cell#85

Biscayne National Park

Island: Main land

Cell Id: 85

Date: 11/01/81

Observers: K.B. Jew

- Abutilon permolle
- Acacia farnesiana
- Acalypha chamaedrifolia
- Acanthocereus tetragonus
- Acrostichum aureum
- Acrostichum danaeifolium
- Agave decipiens
- Agave sisalana
- Aloe vera
- Alternanthera flavescens
- Alternanthera maritima
- Amaranthus hybridus
- Ambrosia artemisiifolia
- Ammannia latifolia
- Amphitecna latifolia
- Amyris elemifera
- Andropogon glomeratus var. pumilus
- Annona glabra
- Ardisia escallonioides
- Argemone mexicana
- Argusia gnaphalodes
- Argythamnia blodgettii
- Aristolochia pentandra
- Aster bracei
- Atriplex pentandra
- Avicennia germinans
- Baccharis angustifolia
- Baccharis glomeruliflora
- Baccharis halimifolia
- Bacopa monnieri
- Batis maritima
- Bidens alba var. radiata
- Blechnum pyramidatum
- Bletia purpurea
- Blutaparion vermiculare
- Boehmeria cylindrica
- Boerhavia diffusa
- Boerhavia erecta
- Borrhichia arborescens
- Borrhichia frutescens
- Bothriochloa barbinodis
- Bothriochloa pertusa
- Bouganvillea glabra
- Bourreria succuenta
- Bucida buceras
- Bursera simaruba
- Caesalpinia bonduc
- Caesalpinia major
- Cakile lanceolata
- Calyptanthus pallens
- Canavalia rosea
- Canella winterana
- Capparis cynophallophora

✓ *Alysicarpus vaginalis*

✓ *Andropogon longibasis*
✓ *Cestrum diurnum*

- Capparis flexuosa
- Capraria biflora
- Capsicum annuum var. glabriusculum
- Cardiospermum microcarpum
- Carica papaya
- Cassytha filiformis
- Casuarina equisetifolia
- Casuarina glauca
- Catharanthus roseus
- Celosia nitida
- Cenchrus echinatus
- Cenchrus incertus
- Chamaesyce blodgettii
- Chamaesyce hirta
- Chamaesyce hypericifolia
- Chamaesyce hyssopifolia
- Chamaesyce mesembrianthemifolia
- Chamaesyce ophthalmica
- Chamaesyce porteriana
- Chiococca alba
- Chiococca parvifolia
- Chromolaena odorata
- Chrysophyllum oliviforme
- Citharexylum spinosum
- Citrus aurantifolia
- Citrus aurantium
- Citrus limon
- Citrus reticulata
- Cladium jamaicense
- Clusia rosea
- Coccoloba diversifolia
- Coccoloba uvifera
- Coccothrinax argentata
- Coccothrinax barbadensis
- Cocos nucifera
- Colubrina arborescens
- Colubrina asiatica
- Colubrina elliptica
- Commelina diffusa var. diffusa
- Conocarpus erectus
- Conyza canadensis var. pusilla
- Cordia globosa
- Cordia sebestena
- Coronopus didymus
- Crossopetalum rhacoma
- Crotalaria pumila
- Cynanchum scoparium
- Cynodon dactylon
- Cyperus esculentus
- Cyperus involucratus
- Cyperus ligularis
- Cyperus planifolius
- Cyperus polystachyos

✓ *Eupatorium serotinum*

- Cyperus rotundus
- Dactyloctenium aegyptium
- Dalbergia brownii
- Dalbergia ecastaphyllum
- Desmanthus virgatus
- Desmodium incanum var. incanum
- Desmodium triflorum
- Dichondra carolinensis
- Dicliptera sexangularis
- Digitaria bicornis
- Digitaria ciliaris
- Digitaria filiformis var. dolichophylla
- Distichlis spicata
- Drypetes diversifolia
- Drypetes lateriflora
- Echites umbellata
- Eclipta prostrata
- Eleusine indica
- Emilia fosbergii
- Encyclia boothiana var. erythronioides
- Encyclia tampensis
- Epipremnum pinnatum
- Eragrostis amabilis
- Eragrostis ciliaris
- Eragrostis eliottii
- Erucastrum gallicum
- Eugenia axillaris
- Eugenia confusa
- Eugenia foetida
- Eugenia rhombea
- Eugenia uniflora
- Eupatorium capillifolium
- Eupatorium leptophyllum
- Eustachys petraea
- Eustoma exaltatum
- Exostema caribaeum
- Exothea paniculata
- Ficus altissima
- Ficus aurea
- Ficus citrifolia
- Fimbristylis cymosa
- Flaveria linearis
- Flaveria trinervia
- Furcraea foetida
- Galactia striata
- Gardenia angusta
- Gaura angustifolia
- Genipa clusiifolia
- Gliricidia sepium
- Gnaphalium pennsylvanicum
- Gnaphalium purpureum
- Gouania lupuloides
- Guajacum sanctum

✓ *Eschscholzia opuntoides*

✓ *Chamaecrista nictitans*
var. *aspera*

✓ *Boerhavia diffusa*
✓ *Arenaria cyprioides*

✓ *Chamaesyce conferta*
✓ *Aristida purpurascens*

- Guapira discolor
- Guettarda elliptica
- Guettarda scabra
- Gymnanthes lucida
- Halodule wrightii
- Halophila decipiens
- Harrisia simpsonii
- Hedyotis corymbosa
- Helianthus debilis subsp. debilis
- Heliotropium angiospermum
- Heliotropium curassavicum
- Heliotropium polyphyllum
- Herissantia crispa
- Hibiscus rosa-sinensis var. rosa-sinensis
- Hibiscus tiliaceus
- Hippocratea volubilis
- Hippomane mancinella
- Hymenocallis latifolia
- Indigofera spicata
- Ipomoea alba
- Ipomoea indica var. acuminata
- Ipomoea pes-caprae subsp. brasiliensis
- Ipomoea violacea
- Iresine diffusa
- Iva imbricata
- Jacquinia keyensis
- Jasminum sambac
- Jatropha multifida
- Juncus roemerianus
- Kalanchoe daigremontiana
- Kalanchoe fedtschenkoi
- Kalanchoe gastronis-bonnieri
- Kalanchoe pinnata
- Kalanchoe tubiflora
- Krugiodendron ferreum
- Laguncularia racemosa
- Lantana camara
- Lantana involucrata
- Lasiacis divaricata
- Latania loddigesii
- Latania lontaroides
- Launaea intybacea
- Leiphaimos parasitica
- Lepidium virginicum
- Leucaena leucocephala
- Limonium carolinianum
- Linaria canadensis
- Ludwigia octovalvis
- Lycium carolinianum
- Lysiloma latisiliquum
- Malvastrum corchorifolium
- Mangifera indica
- Manilkara jaimiqui subsp. emarginata
- Manilkara zapota
- Maytenus phyllanthoides
- Medicago lupulina
- Melanthera nivea
- Melicoccus bijugatus
- Melilotus albus
- Melothria pendula
- Metopium toxiferum

Ipomoea alba
Heliotropium procumbens

Phyla strobilifera

- Microgramma heterophylla
- Mikania cordifolia
- Mikania scandens
- Mitreola petiolata
- Momordica charantia
- Monanthochloe littoralis
- Morinda citrifolia
- Morinda royoc
- Musa acuminata
- Nama jamaicense
- Nephrolepis biserrata
- Nephrolepis falcata f. furcans
- Nerium oleander
- Nevrodium lanceolatum
- Neyraudia reynaudiana
- Ocotea coriacea
- Oeceoclades maculata
- Okenia hypogaea
- Opuntia stricta
- Oxalis corniculata
- Panicum amarum
- Panicum repens
- Panicum virgatum
- Parietaria floridana
- Parkinsonia aculeata
- Parthenium hysterophorus
- Parthenocissus quinquefolia
- Paspalum blodgettii
- Paspalum caespitosum
- Paspalum notatum
- Paspalum pleostachyum
- Paspalum setaceum
- Paspalum vaginatum
- Passiflora multiflora
- Passiflora suberosa
- Pectis glaucescens
- Pectis prostrata
- Pennisetum purpureum
- Pentalinon luteum
- Phoenix dactylifera
- Phoenix reclinata
- Phoradendron rubrum
- Phyla nodiflora
- Phyllanthus amarus
- Pilea microphylla
- Piscidia piscipula
- Pisonia aculeata
- Pithecellobium dulce
- Pithecellobium keyense
- Pithecellobium unguis-cati
- Pleopeltis polypodioides var. michauxiana
- Pluchea carolinensis
- Pluchea odorata
- Pluchea rosea
- Poinsettia cyathophora
- Poinsettia heterophylla
- Polypermum procumbens
- Polystachya concreta
- Portulaca oleracea
- Portulaca pilosa
- Pouteria campechiana

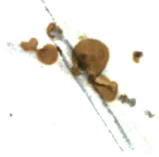
- Pouteria domingensis
- Proserpinaca palustris
- Pseudophoenix sargentii
- Psilotum nudum
- Psychotria nervosa
- Pteridium aquilinum var. caudatum
- Pteris vittata
- Randia aculeata
- Reynosia septentrionalis
- Rhabdadenia biflora
- Rhizophora mangle
- Rhynchelytrum repens
- Rhynchosia minima
- Rhynchosia swartzii
- Rhynchospora colorata
- Richardia brasiliensis
- Richardia grandiflora
- Ricinus communis
- Rivina humilis
- Sabal palmetto
- Sagittaria graminea var. graminea
- Sagittaria lancifolia
- Salicornia bigelovii
- Salicornia perennis
- Salvia micrantha
- Salvia serotina
- Samolus ebracteatus
- Samolus valerandi subsp. parviflorus
- Sansevieria hyacinthoides
- Sansevieria trifasciata
- Sapindus saponaria
- Sarcostemma clausum
- Scaevola plumieri
- Scaevola sericea
- Schaefferia frutescens
- Schefflera actinophylla
- Schinus terebinthifolius
- Schizachyrium gracile
- Schizachyrium rhizomatum
- Schizachyrium sanguineum
- Senna pendula var. glabrata
- Sesuvium maritimum
- Sesuvium portulacastrum
- Setaria parviflora
- Sida abutilifolia
- Sida acuta
- Sida ciliaris
- Sida rhombifolia
- Sideroxylon celastrinum
- Sideroxylon foetidissimum
- Sideroxylon salicifolium
- Simarouba glauca
- Smilax havanensis
- Solanum americanum
- Solanum bahamense
- Solanum erianthum
- Solidago sempervirens
- Sonchus oleraceus
- Sophora tomentosa var.
- Spartina patens
- Spartina spartinae

Phyllanthus pentaphyllus var. floridanus

Spomea triloba

Manilkara jaimiqui

Boerhaavia carolinensis
Pteris bahamensis



- Spermacoe assurgens
- Spermacoe floridana
- Spermacoe verticillata
- Spigelia anthelmia
- Spiranthes polyantha
- Sporobolus domingensis
- Sporobolus indicus var. indicus
- Sporobolus indicus var. pyramidalis
- Sporobolus pyramidatus
- Sporobolus virginicus
- Stachytarpheta jamaicensis
- Stenotaphrum secundatum
- Stylosanthes hamata
- Suaeda linearis
- Suriana maritima
- Swietenia mahagoni
- Syringodium filiforme
- Tamarindus indica
- Terminalia catappa
- Thalassia testudinum
- Thelypteris kunthii
- Thespesia populnea
- Thevetia peruviana
- Thrinax morrisii
- Thrinax radiata
- Tillandsia balbisiana
- Tillandsia fasciculata var. densispica
- Tillandsia flexuosa
- Tillandsia paucifolia
- Tillandsia recurvata
- Tillandsia usneoides
- Tillandsia utriculata
- Tournefortia volubilis
- Tradescantia pallida
- Tradescantia spathacea
- Trema lamarckianum
- Trema micranthum
- Trianthema portulacastrum
- Tridax procumbens
- Trifolium repens
- Typha domingensis
- Uniola paniculata
- Urochloa adspersa
- Urochloa mutica
- Urochloa subquadriflora
- Utricularia foliosa
- Vallesia antillana
- Veitchia merrillii
- Vernonia cinerea
- Vigna luteola
- Vitis rotundifolia
- Waltheria indica
- Wedelia trilobata
- Ximenia americana
- Youngia japonica
- Yucca aloifolia
- Zamia integrifolia
- Zanthoxylum fagara
- Zoysia japonica
- Zoysia matrella
- Zoysia tenuifolia

cf Stylosanthes calcicola

Arec. Mariposa in Park. Cell 8A
 866747; 2822603

Typha domingensis
 Sporobolus virginicus

Zoysia sp. - sterile.

National Park Service Transect Data Sheets

Date: 11/01/01

Observers: KB JW

Location Index #: 85

Transect #

Bearing (deg.):

Start Long.:

End Long.:

Start Lat.:

End Lat.:

Total Length:

Comments:

T1: 85E -> 567159; 2822585 to 85W 566925; 2822582
T2: 85N W: 566751; 2822630 to 85N E -> 567028; 2822682

Species on transect line #	1	2
	Flax line	Alizuang
	Seta parv	Ruabif
	Spervert	Ligurace
	Pasp. asi.	AcroDana
	Heliproc	Acroaer
	Pennis. sub	Bacomom
	Sidaeent	Avicgerm
	Emblecymo	
	Eragall	
	Bidealcarad	
	Eust petr	
	Pasp. caes	
	Phylmod.	
	Spor. Dami	
	Wettind.	
	Pasp. seta	
	Chamcomf	
	Arispurp	
	Dactaesy	
	Polyproe	
	Stacjama	
	Pectglaw	
	Schising	
	Cencine	
	Andrlong	
	Neyreyh	
	Epomtril	
	Samoebra	
	Schigrae	
	Ptervikt	
	Alysvagi	
	Pichate	
	Sivenseu	
	Eremophi	

Biscayne National Park Intercept Data Sheets

Date: 11/01/01
 Observers: KB SW
 Location Index #: 85
 Transect #: 1
 Bearing (deg.):
 Comments:

Quad. 2.25 m Intercept#: 1 — 11 Paspseta 21 Eragelli 31 Eragelli 41 —
 Taxa: Spervet
 Comments:

Quad. 2.5 m Intercept#: 2 Finbcymo 12 Paspcaes 22 — 32 Eragelli 42 Paspseta
 Taxa:
 Comments:

Quad. 2.5 m Intercept#: 3 Spervet 13 — 23 Paspcaes 33 Eragelli 43 —
 Taxa:
 Comments:

Quad. 2.5 m Intercept#: 4 Finbcymo 14 — 24 Paspcaes 34 Paspcaes 44 Sporidom
 Taxa: Sidaacet
 Comments:

Quad. 2.5 m Intercept#: 5 Phylnod 15 Waltind 25 Eragelli 35 Andrlong 45 Eragell
 Taxa: Sporidom
 Comments:

Quad. 2.5 m Intercept#: 6 — 16 Sporidom 26 Paspcaes 36 Phylnod 46 Waltind
 Taxa:
 Comments:

Quad. 2.5 m Intercept#: 7 Paspseta 17 Paspvagi 27 Paspcaes 37 — 47 Heliproc
 Taxa:
 Comments:

Quad. 2.5 m Intercept#: 8 Paspvagi 18 Arispuro 28 Paspcaes 38 — 48 Negrocy
 Taxa:
 Comments:

Quad. 2.5 m Intercept#: 9 Paspcaes 19 Finbcymo 29 Paspcaes 39 — 49 Spervet
 Taxa: Waltind
 Eragelli
 Comments:

Quad. 2.5 m Intercept#: 10 Flavline 20 Finbcymo 30 Paspcaes 40 — 50 Spervet
 Taxa: Phylnod Paspseta Paspcaes
 Comments:

Biscayne National Park Intercept Data Sheets

Date: 11/01/01

Observers: KB SW

Location Index #: 85

Transect #: 1

Bearing (deg.):

Comments:

Quad. 2.215 m Intercept#: 51 *Pinkeyna* 61 *Schizrae* 71 *Spervert* 81 *Schizrae* 91 *Paspcaes*

Taxa: *Spervert* *Eragelli*

Comments:

Quad. 2.5 m Intercept#: 52 *Stacjama* 62 *Paspcaes* 72 *Phylnod* 82 *Paspcaes* 92 *Paspcaes*

Taxa: *Eragelli* *Paspcaes*

Comments:

Quad. 2.5 m Intercept#: 53 *Paspcaes* 63 — 73 *Spervert* 83 *Paspcaes* 93 *Stacjama*

Taxa: *Schizrae* *Phylnod* *Paspcaes*

Comments:

Quad. 2.5 m Intercept#: 54 *Paspcaes* 64 *Eragelli* 74 *Eragelli* 84 *Paspcaes* 94 *Pinkeyna*

Taxa: *Paspcaes* *Phylnod* *Paspcaes* *Pinkeyna*

Comments:

Quad. 2.5 m Intercept#: 55 *Eragelli* 65 *Schisang* 75 *AnOrlong* 85 *Pinkeyna* 95 *Stacjama*

Taxa: *Schizrae* *Paspcaes*

Comments:

Quad. 2.5 m Intercept#: 56 *Paspcaes* 66 *Schisang* 76 *Schisang* 86 *Paspcaes* 96 *Stacjama*

Taxa: *Eragelli* *Pinkeyna*

Comments:

Quad. 2.5 m Intercept#: 57 *Paspcaes* 67 *Eragelli* 77 *Paspcaes* 87 *Eragelli* 97 *Stacjama*

Taxa: *Paspcaes* *Pinkeyna*

Comments:

Quad. 2.5 m Intercept#: 58 *Eragelli* 68 *Paspcaes* 78 *Schisang* 88 *Phylnod* 98 *Eragelli*

Taxa: *Eragelli* *Paspcaes*

Comments:

Quad. 2.5 m Intercept#: 59 *Spervert* 69 *Schisang* 79 *Chamconf* 89 *Paspcaes* 99 *Spervert*

Taxa: *Eragelli* *Paspcaes* *Paspcaes* *Paspcaes*

Comments:

Quad. 2.5 m Intercept#: 60 *Eragelli* 70 *Schisang* 80 *Spervert* 90 *Paspcaes* 100 *Paspcaes*

Taxa: *Paspcaes* *Eragelli* *Schizrae* *Paspcaes* *Spervert*

Comments:

Jiscayne National Park Intercept Data Sheets

Date: 11/01/01
 Observers: KB SW
 Location Index #: 85
 Transect #: 2
 Bearing (deg.):
 Comments:

Quad. 2.5 m Intercept#: 1
 Taxa: Lagurace Rhizomang Acrodana Rhizomang Rhizomang Rhizomang
 Comments:

Quad. 2.5 m Intercept#: 2
 Taxa: Acrodana Rhizomang Acrodana Rhizomang Acrodana Rhizomang
 Comments:

Quad. 2.5 m Intercept#: 3
 Taxa: Rhizomang Rhizomang Rhizomang Rhizomang Rhizomang
 Comments:

Quad. 2.5 m Intercept#: 4
 Taxa: Rhizomang Rhizomang Rhizomang Rhizomang Rhizomang
 Comments:

Quad. 2.5 m Intercept#: 5
 Taxa: Acrodana Rhizomang Rhizomang Couceae Lagurace Rhizomang
 Comments:

Quad. 2.5 m Intercept#: 6
 Taxa: Lagurace Rhizomang Rhizomang Lagurace Rhizomang Rhizomang
 Comments:

Quad. 2.5 m Intercept#: 7
 Taxa: Lagurace Rhizomang Rhizomang Lagurace Rhizomang Rhizomang
 Comments:

Quad. 2.5 m Intercept#: 8
 Taxa: Acrodana Rhizomang Rhizomang Rhizomang Rhizomang Rhizomang
 Comments:

Quad. 2.5 m Intercept#: 9
 Taxa: Rhizomang Acrodana Rhizomang Rhizomang Rhizomang Rhizomang
 Comments:

Quad. 2.5 m Intercept#: 10
 Taxa: Acrodana Rhizomang Rhizomang Rhizomang Rhizomang Rhizomang
 Comments:

National Park Intercept Data Sheets

Date: 11/01/01

Observers: CB SW

Location Index #: 85

Transect #: 2

Bearing (deg.):

Comments:

Quad. 2.2.5 m Intercept#:	51	Laguraceae Rhinanthus	Laguraceae	Laguraceae Aucigerum	Laguraceae Rhinanthus	Rhinanthus Rhabdip
Taxa:						
Comments:						
Quad. 2.5 m Intercept#:	52	Rhabdip Rhinanthus	Rhinanthus Laguraceae	Laguraceae	Rhinanthus Laguraceae	Rhinanthus
Taxa:						
Comments:						
Quad. 2.5 m Intercept#:	53	Rhinanthus Laguraceae	Rhinanthus Laguraceae	Laguraceae	Rhinanthus	Rhinanthus
Taxa:						
Comments:						
Quad. 2.5 m Intercept#:	54	Rhinanthus	Rhinanthus Laguraceae	Laguraceae	Rhinanthus Rhabdip	Laguraceae
Taxa:						
Comments:						
Quad. 2.5 m Intercept#:	55	Rhinanthus Laguraceae	Laguraceae	Rhabdip Rhinanthus	Rhinanthus Laguraceae	Laguraceae
Taxa:						
Comments:						
Quad. 2.5 m Intercept#:	56	Rhinanthus	Laguraceae	Rhabdip Rhinanthus	Rhinanthus Aucigerum	Rhinanthus
Taxa:						
Comments:						
Quad. 2.5 m Intercept#:	57	Rhinanthus Laguraceae	—	Rhinanthus	Rhinanthus Laguraceae	Aucigerum
Taxa:						
Comments:						
Quad. 2.5 m Intercept#:	58	Rhinanthus Laguraceae	Rhabdip Laguraceae	Rhinanthus Laguraceae	Rhinanthus Rhabdip	Aucigerum Rhinanthus
Taxa:						
Comments:						
Quad. 2.5 m Intercept#:	59	Laguraceae	Laguraceae	Rhabdip Rhinanthus	Rhinanthus Rhabdip	Rhinanthus
Taxa:						
Comments:						
Quad. 2.5 m Intercept#:	60	Rhinanthus	Rhinanthus Laguraceae	Laguraceae	Rhinanthus Laguraceae	Rhinanthus
Taxa:						
Comments:						