

Biscayne National Park

Island: Elliot St

Cell Id: 116

Date: 11/8/01

Observers: LB SW

*subsp. debilis*

- Abutilon permolle
- Acacia farnesiana
- Acalypha chamaedrifolia
- Acanthocereus tetragonus
- Acrostichum aureum
- Acrostichum danaeifolium
- Agave decipiens
- Agave sisalana
- Aloe vera
- Alternanthera flavescens
- Amaranthus hybridus
- Ambrosia artemisiifolia
- Ammannia latifolia
- Amphitecna latifolia
- Amyris elemifera
- Andropogon glomeratus var. pumilus
- Annona glabra
- Ardisia escallonioides
- Argemone mexicana
- Argusia gnaphalodes
- Argythamnia blodgettii
- Aristolochia pentandra
- Aster bracei
- Atriplex pentandra
- Avicennia germinans
- Baccharis angustifolia
- Baccharis glomeruliflora
- Baccharis halimifolia
- Bacopa monnieri
- Batis maritima
- Bidens alba var. radiata
- Blechum pyramidatum
- Bletia purpurea
- Blutaparon vermiculare
- Boehmeria cylindrica
- Boerhavia diffusa
- Boerhavia erecta
- Borrichia arborescens
- Borrichia frutescens
- Bothriochloa barbinodis
- Bothriochloa pertusa
- Bouganvillea glabra
- Bourreria succulenta
- Bucida buceras
- Bursera simaruba
- Caesalpinia bonduc
- Caesalpinia major
- Cakile lanceolata
- Calyptranthes pallens
- Canavalia rosea
- Canella winterana
- Capparis cynophallophora
- Capparis flexuosa

Pin  
1/16

2811  
23805

Site 2811

21523: Elliott Key Cell #18  
21574 Elliott Key  
21575 Biscayne NP

- Capraria biflora
- Capsicum annuum var. glabriusculum
- Cardiospermum microcarpum
- Carica papaya only several dead plants
- Cassytha filiformis
- Casuarina equisetifolia
- Casuarina glauca
- Catharanthus roseus
- Celosia nitida
- Cenchrus echinatus
- Cenchrus incertus
- Chamaesyce blodgettii
- Chamaesyce hirta
- Chamaesyce hypericifolia
- Chamaesyce hyssopifolia
- Chamaesyce mesembrianthemifolia
- Chamaesyce ophthalmica
- Chamaesyce porteriana
- Chiococca alba
- Chiococca parvifolia
- Chromolaena odorata
- Chrysophyllum oliviforme
- Citharexylum spinosum
- Citrus aurantifolia
- Citrus aurantium
- Citrus limon
- Citrus reticulata
- Cladium jamaicense
- Clusia rosea
- Cocoloba diversifolia
- Cocoloba uvifera
- Coccolobina argentea
- Coccolobina barbadensis
- Cocos nucifera
- Colubrina arborescens
- Colubrina asiatica
- Colubrina elliptica
- Commelina diffusa var. diffusa
- Conocarpus erectus
- Conyza canadensis var. pusilla
- Cordia globosa
- Cordia sebestena
- Coronopus didymus
- Crossopetalum rhacoma
- Crotalaria pumila
- Cynanchum scoparium
- Cynodon dactylon
- Cyperus esculentus
- Cyperus involucratus
- Cyperus ligularis
- Cyperus planifolius
- Cyperus polystachyos
- Cyperus rotundus

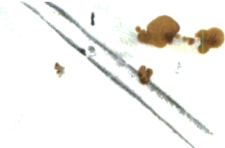
- Dactyloctenium aegyptium
- Dalbergia brownii
- Dalbergia ecastaphyllum
- Desmanthus virgatus
- Desmodium incanum var. incanum
- Desmodium triflorum
- Dichondra carolinensis
- Dicliptera sexangularis
- Digitaria bicornis
- Digitaria ciliaris
- Digitaria filiformis var. dolichophylla
- Distichlis spicata
- Drypetes diversifolia
- Drypetes lateriflora
- Echites umbellata
- Eclipta prostrata
- Eleusine indica
- Emilia fosbergii
- Encyclia boothiana var. erythronioides
- Encyclia tampensis
- Epipremnum pinnatum
- Eragrostis amabilis
- Eragrostis ciliaris
- Eragrostis elliotii
- Erucastrum gallicum
- Eugenia axillaris
- Eugenia confusa
- Eugenia foetida
- Eugenia rhombea
- Eugenia uniflora
- Eupatorium capillifolium
- Eupatorium leptophyllum
- Eustachys petraea
- Eustoma exaltatum
- Exostema caribaeum
- Exothea paniculata
- Ficus altissima
- Ficus aurea
- Ficus citrifolia
- Fimbristylis cymosa
- Flaveria linearis
- Flaveria trinervia
- Furcraea foetida
- Galactia striata
- Gardenia angusta
- Gaura angustifolia
- Genipa clusiifolia
- Gliricidia sepium
- Gnaphalium pennsylvanicum
- Gnaphalium purpureum
- Gouania lupuloides
- Guajacum sanctum
- Guapira discolor

VCADITOPERMUM CERINDUM

- Guettarda elliptica*  
 *Guettarda scabra*  
 *Gymnanthes lucida*  
 *Halodule wrightii*  
 *Halophila decipiens*  
 *Harrisia simpsonii*  
 *Hedyotis corymbosa*  
 *Helianthus debilis* subsp. *debilis*  
 *Heliotropium angiospermum*  
 *Heliotropium curassavicum*  
 *Heliotropium polyphyllum*  
 *Herissantia crispata*  
 *Hibiscus rosa-sinensis* var. *rosa-sinensis*  
 *Hibiscus tiliaceus*  
 *Hippocratea volubilis*  
 *Hippomane mancinella*  
 *Hymenocallis latifolia*  
 *Indigofera spicata*  
 *Ipomoea alba*  
 *Ipomoea indica* var. *acuminata*  
 *Ipomoea pes-caprae* subsp. *brasiliensis*  
 *Ipomoea violacea*  
 *Iresine diffusa*  
 *Iva imbricata*  
 *Jacquinia keyensis*  
 *Jasminum sambac*  
 *Jatropha multifida*  
 *Juncus roemerianus*  
 *Kalanchoe daigremontiana*  
 *Kalanchoe fedtschenkoi*  
 *Kalanchoe gastronis-bonnierii*  
 *Kalanchoe pinnata*  
 *Kalanchoe tubiflora*  
 *Krugiodendron ferreum*  
 *Laguncularia racemosa*  
 *Lantana camara*  
 *Lantana involucrata*  
 *Lasiacis divaricata*  
 *Latania loddigesii*  
 *Latania lontaroides*  
 *Launaea intybacea*  
 *Leiphaimos parasitica*  
 *Lepidium virginicum*  
 *Leucaena leucocephala*  
 *Limonium carolinianum*  
 *Linaria canadensis*  
 *Ludwigia octovalvis*  
 *Lycium carolinianum*  
 *Lysiloma latisiliquum*  
 *Malvastrum corchorifolium*  
 *Mangifera indica*  
 *Manilkara jaimiqui* subsp. *emarginata*  
 *Manilkara zapota*  
 *Maytenus phyllanthoides*  
 *Medicago lupulina*  
 *Melanthera nivea*  
 *Melicoccus bijugatus*  
 *Melilotus albus*  
 *Melothria pendula*  
 *Metopium toxiferum*  
 *Microgramma heterophylla*  
 *Mikania cordifolia*  
 *Mikania scandens*  
 *Mitreola petiolata*  
 *Momordica charantia*  
 *Monanthonchloe littoralis*  
 *Morinda citrifolia*  
 *Morinda royoc*  
 *Musa acuminata*  
 *Nama jamaicense*  
 *Nephrolepis falcata* f. *furcans*  
 *Nerium oleander*  
 *Nevrodium lanceolatum*  
 *Neyraudia reynaudiana*  
 *Ocotea coriacea*  
 *Oeceoclades maculata*  
 *Okenia hypogaea*  
 *Opuntia stricta*  
 *Oxalis corniculata*  
 *Panicum amarum*  
 *Panicum repens*  
 *Panicum virgatum*  
 *Parietaria floridana*  
 *Parkinsonia aculeata*  
 *Parthenium hysterophorus*  
 *Parthenocissus quinquefolia*  
 *Paspalum blodgettii*  
 *Paspalum caespitosum*  
 *Paspalum notatum*  
 *Paspalum pleostachyum*  
 *Paspalum setaceum*  
 *Paspalum vaginatum*  
 *Passiflora multiflora*  
 *Passiflora suberosa*  
 *Pectis glaucescens*  
 *Pectis prostrata*  
 *Pennisetum purpureum*  
 *Pentalinon luteum*  
 *Phoenix dactylifera*  
 *Phoenix reclinata*  
 *Phoradendron rubrum*  
 *Phyla nodiflora*  
 *Phyllanthus amarus*  
 *Pilea microphylla*  
 *Piscidia piscipula*  
 *Pisonia aculeata*  
 *Pithecellobium dulce*  
 *Pithecellobium keyense*  
 *Pithecellobium unguis-cati*  
 *Pleopeltis polypodioides* var. *michauxiana*  
 *Pluchea carolinensis*  
 *Pluchea odorata*  
 *Pluchea rosea*  
 *Poinsettia cyathophora*  
 *Poinsettia heterophylla*  
 *Polypremum procumbens*  
 *Polystachya concreta*  
 *Portulaca oleracea*  
 *Portulaca pilosa*  
 *Pouteria campechiana*  
 *Pouteria domingensis*  
 *Proserpinaca palustris*  
 *Pseudophoenix sargentii*  
 *Psilotum nudum*  
 *Psychotria nervosa*  
 *Pteridium aquilinum* var. *caudatum*  
 *Pteris vittata*  
 *Randia aculeata*  
 *Reynosia septentrionalis*  
 *Rhabdadenia biflora*  
 *Rhizophora mangle*  
 *Rhynchelytrum repens*  
 *Rhynchosia minima*  
 *Rhynchosia swartzii*  
 *Rhynchospora colorata*  
 *Richardia brasiliensis*  
 *Richardia grandiflora*  
 *Ricinus communis*  
 *Rivina humilis*  
 *Sabal palmetto*  
 *Sagittaria graminea* var. *graminea*  
 *Sagittaria lancifolia*  
 *Salicornia bigelovii*  
 *Salicornia perennis*  
 *Salvia micrantha*  
 *Salvia serotina*  
 *Samolus ebracteatus*  
 *Samolus valerandi* subsp. *parviflorus*  
 *Sansevieria hyacinthoides*  
 *Sansevieria trifasciata*  
 *Sapindus saponaria*  
 *Sarcostemma clausum*  
 *Scaevola plumieri*  
 *Scaevola sericea*  
 *Schaefferia frutescens*  
 *Schefflera actinophylla*  
 *Schinus terebinthifolius*  
 *Schizachyrium gracile*  
 *Schizachyrium rhizomatum*  
 *Schizachyrium sanguineum*  
 *Senna pendula* var. *glabrata*  
 *Sesuvium maritimum*  
 *Sesuvium portulacastrum*  
 *Setaria parviflora*  
 *Sida abutilifolia*  
 *Sida acuta*  
 *Sida ciliaris*  
 *Sida rhombifolia*  
 *Sideroxylon celastrinum*  
 *Sideroxylon foetidissimum*  
 *Sideroxylon salicifolium*  
 *Simarouba glauca*  
 *Smilax havanensis*  
 *Solanum americanum*  
 *Solanum bahamense*  
 *Solanum erianthum*  
 *Solidago sempervirens*  
 *Sonchus oleraceus*  
 *Sophora tomentosa* var. *truncata*  
 *Spartina patens*  
 *Spartina spartinae*  
 *Spermacoce assurgens*  
 *Spermacoce floridana*

- Spermacoe verticillata
- Spigelia anthelmia
- Spiranthes polyantha
- Sporobolus domingensis
- Sporobolus indicus var. indicus
- Sporobolus indicus var. pyramidalis
- Sporobolus pyramidatus
- Sporobolus virginicus
- Stachytarpheta jamaicensis
- Stenotaphrum secundatum
- Stylosanthes hamata
- Suaeda linearis
- Suriana maritima
- Swietenia mahagoni
- Syringodium filiforme
- Tamarindus indica
- Terminalia catappa
- Thalassia testudinum
- Thelypteris kunthii
- Thespesia populnea
- Thevetia peruviana
- Thrinax morrisii
- Thrinax radiata
- Tillandsia balbisiana
- Tillandsia fasciculata var. densispica
- Tillandsia flexuosa
- Tillandsia paucifolia
- Tillandsia recurvata
- Tillandsia usneoides
- Tillandsia utriculata
- Tournefortia volubilis
- Tradescantia pallida
- Tradescantia spathacea
- Trema lamarckianum
- Trema micranthum
- Trianthema portulacastrum
- Tridax procumbens
- Trifolium repens
- Typha domingensis
- Uniola paniculata
- Urochloa adspersa
- Urochloa mutica
- Urochloa subquadrifaria
- Utricularia foliosa
- Vallesia antillana
- Veitchia merrillii
- Vernonia cinerea
- Vigna luteola
- Vitis rotundifolia
- Waltheria indica
- Wedelia trilobata
- Ximenia americana
- Youngia japonica
- Yucca aloifolia
- Zamia integrifolia
- Zanthoxylum fagara
- Zoysia japonica
- Zoysia matrella
- Zoysia tenuifolia

*[Faint, illegible text, likely bleed-through from the reverse side of the page]*



National Park Service Transect Data Sheets

Date: 11/2/01

Observers: KB SW

Location Index #: 16

Transect # 1/2

Bearing (deg.):

Start Long.:

End Long.:

Start Lat.:

End Lat.:

Total Length:

Comments:

small cell, only 1 transect run

1

2

Species on transect line #

Moringo

Hippuris

Coahuila

Capplex

Pandanus

Exotpani

Borssima

Pithoncu

Pisodew

Smithava

Alteflau

Sdaeria

Trail Park Intercept Data Sheets

Date: 11/8/01

Observers: 43 SW

Location Index #: 18

Transect # 1

Bearing (deg.):

Comments:

Quad. 2.25 m Intercept#:	1. Eugeatil	11 Coccid	2. Eugeatil	31 Goualupo	41 Coccid
Taxa:	Coccid Swiemaha	Sidefoot		Coccid	Eugeatil Swiemaha
Comments:					
Quad. 2.5 m Intercept#:	2 Eugeatil	Coccid	Chvasia	Boursucc	Coccid
Taxa:	Swiemaha	Sidefoot	Sidefoot	Corvasia Swiemaha	Eugeatil
Comments:					
Quad. 2.5 m Intercept#:	3 Eugeatil	-	Pandora	Coccid	Krugferr
Taxa:	Swiemaha		Coccid Sidefoot	Swiemaha Eugeatil	Caesbon Metotoxi
Comments:					
Quad. 2.5 m Intercept#:	4 Eugeatil	Chvasia	Krugferr	Coccid	Coccid
Taxa:	Swiemaha Metotoxi		Eugeatil	Swiemaha	Swiemaha
Comments:					
Quad. 2.5 m Intercept#:	5 Hippudu	Ximeaner	Chivalca	Coccid	Eugeatil
Taxa:	Swiemaha	Eugeatil	Ficucitr	Metotoxi	Metotoxi Coccid
Comments:					
Quad. 2.5 m Intercept#:	6 Eugeatil	Coccid	Coccid	Coccid	Coccid
Taxa:	Coccid Hippudu Metotoxi	Sidefoot	Ficucitr		
Comments:					
Quad. 2.5 m Intercept#:	7 Ximeaner	Eugeatil	Coccid	Manizapo	Coccid
Taxa:	Metotoxi	Manizapo Sidefoot	Metotoxi	Swiemaha Coccid	
Comments:					
Quad. 2.5 m Intercept#:	8 Ximeaner	Metotoxi	Goapdisc	Manizapo	Eugeatil
Taxa:	Swiemaha Krugferr	Chvasia Krugferr	Chvasia Swiemaha	Swiemaha Coccid	Krugferr Coccid
Comments:					
Quad. 2.5 m Intercept#:	9 Manizapo	Manizapo	Metotoxi	<del>Manizapo</del>	Eugeatil
Taxa:	Metotoxi Ximeaner	Pisoact	Tourudu Chvasia	Ficucitr	Swiemaha Coccid
Comments:					
Quad. 2.5 m Intercept#:	10 Manizapo	Eugeatil	Coccid	Goapdisc	Swiemaha
Taxa:	Ximeaner Metotoxi		Swiemaha	Krugferr Metotoxi Swiemaha	Eugeatil
Comments:					

Mal Park Intercept Data Sheets

Date: 11/2/01

Observers: KB SW

Location Index #: 19

Transect #: 1

Bearing (deg.):

Comments:

Quad. 2.2.5 m Intercept#: 51	Krusferr Swiemaha	Coccidiae Krusferr Gozalupu	Coccidiae Eusefoet Gozalupu Piscipisc Metotoxi	Coccidiae Piscipisc	Eusefoet Gozalupu Coccidiae
Quad. 2.5 m Intercept#: 52	Coccidiae Metotoxi	Coccidiae Eusefoet Metotoxi	Eusefoet Coccidiae Metotoxi Parsmult	Eusefoet Coccidiae Metotoxi	Coccidiae Gozalupu
Quad. 2.5 m Intercept#: 53	Simaglaw Manizapo Coccidiae	Sidefoet Eusefoet Metotoxi	Coccidiae Coccidiae	Piscipisc Coccidiae Coccidiae	Eusefoet Manizapo
Quad. 2.5 m Intercept#: 54	Metotoxi	Eusefoet Maringo Krusferr Metotoxi	Eusefoet Coccidiae Coccidiae	Piscipisc Coccidiae Coccidiae	Coccidiae
Quad. 2.5 m Intercept#: 55	Boursucc Coccidiae Eusefoet Swiemaha	Metotoxi	Eusefoet Coccidiae	Eusefoet Coccidiae Coccidiae	Swiemaha Piscipisc
Quad. 2.5 m Intercept#: 56	Eusefoet Swiemaha	Caesmajo Coccidiae Metotoxi	Gozalupu Coccidiae Coccidiae	Eusefoet Boursucc Coccidiae	Eusefoet Piscipisc
Quad. 2.5 m Intercept#: 57	Eusefoet Metotoxi	Eusefoet Boursucc Gozalupu	Krusferr Coccidiae	Manizapo Coccidiae	Gozalupu Swiemaha
Quad. 2.5 m Intercept#: 58	Metotoxi Eusefoet	Parsmult Gozalupu Pisoacu	Coccidiae Pihungu Coccidiae	Epomidiaceae Coccidiae Coccidiae	Gozalupu Swiemaha
Quad. 2.5 m Intercept#: 59	Coccidiae Metotoxi	Coccidiae Metotoxi	Eusefoet Coccidiae Pihungu	Gozalupu Pihungu Coccidiae Epomidiaceae	Coccidiae
Quad. 2.5 m Intercept#: 60	Eusefoet Parsmult Eusefoet Boursucc	Coccidiae Coccidiae	Eusefoet Coccidiae Metotoxi Gozalupu	Coccidiae Eusefoet Gozalupu	Swiemaha