

Ref ID #46289

Bradley, K. B. and S. Hodges. 2004. Observations of vascular plants at Big Cypress National Preserve, cell #AX02, Collier County, Florida. 20 May 2004. The Institute for Regional Conservation, Miami, FL.

SiteRefID

59610

59611

SiteID

Big Cypress National Preserve

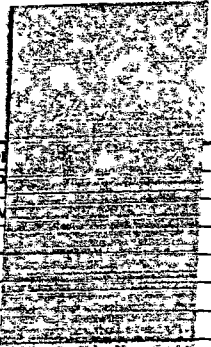
Big Cypress National Preserve Cell #AX02

anc ent
B

enter Ama-spin!

Traced data extend LGM

collected 2/2/87



Plants of Big Cypress based on			
CELL# AX02		Apios americana !!	Buchnera americana !!
Date: 5/20/04 Observed		Apteria aphylla *!	Bucida buceras
Abrus precatorius !		Ardisia escallonioides !!	Bulbostylis ciliatifolia
Abutilon perfoliate		Argemone mexicana	Bulbostylis stenophylla
Acacia pinetorum		Aristida beyrichiana !	Burmannia capitata !
Acalypha gracilens		Aristida patula !!	Burmannia flava
Acalypha ostryifolia		Aristida purpurascens !	Bursera simaruba
Acer rubrum		Aristida spiciformis	Caesalpinia bonduc !
Acnella oppositifolia var. repens !		Arnoglossum ovatum !	Calliandra haematocephala
Acoelorrhaphe wrightii	✓	Arundo donax *†	Callicarpa americana !!
Acrostichum aureum *!		Asclepias curassavica	Callisia repens *!
Acrostichum danaeifolium!		Asclepias incarnata!	Calopogon multiflorus!
Adiantum capillus-veneris*		Asclepias lanceolata !!	Calopogon tuberosus!
Adiantum tenerum*		Asclepias longifolia	Calyptocarpus vialis *!
Aechmea bracteata *		Asclepias tuberosa !	Calyptanthus pallens!
Aechmea victoriana C*!		Asclepias verticillata !	Calystoglia sepium subsp. limnophila
Aeschynomene americana		Asimina reticulata	Campanula floridana
Aeschynomene pratensis!		Asparagus setaceus *C	Campsis radicans !
Agalinis fasciculata !!		Asplenium serratum	Campylocentrum pachyrrhizum
Agalinis filifolia		Aster adnatus	Campyloneuron angustifolium*
Agalinis linifolia !		Aster brucei	Campyloneuron phyllitidis !!
Agalinis maritima		Aster carolinianus	Canna flaccida
Agave decipiens *		Aster concolor	Caperonia castaneifolia !!
Agave sisifana *		Aster dumosus !	Capparis cynophallophora *
Ageratum houstonianum *!		Aster elliptii	Capparis flexuosa
Ageratina jucunda	✓	Aster fontinale *	Capraria biflora !
Albizia lebeck		Aster subulatus !	Cardamine pennsylvanica*
Aletris bracteata		Avicennia geminans !	Cardiospermum corindum
Aletris lutea	✓	Axonopus compressus*!	Cardiospermum microcarpum
Allamanda cathartica *	✓	Axonopus fissifolius*!	Carex comosa *!
Alpinia zerumbet		Axonopus furcatus !	Carex gigantea!
Alternanthera flavescens *!		Azolla caroliniana	Carex longii*!
Alysicarpus ovalifolius		Baccharis angustifolia	Carex lupuliformis !
Alysicarpus vaginalis		Baccharis glomeruliflora	Carex verrucosa *!
Amaranthus australis	✓	Baccharis halimifolia	Carex vexans *!
Amaranthus viridis*	✓	Bacopa caroliniana !!	Carica papaya
Ambrosia artemisiifolia !!		Bacopa monnieri	Carphephorus corymbosus
Ammannia latifolia		Bambusa sp. C	Carphephorus odoratissimus var. subtropicatus* !
Amorpha fruticosa		Bartonia paniculata !	Caryota mitis
Amorpha herbacea		Bartonia virginica *	Cassipoua filiformis !!
Ampelopsis arborea !!		Batis maritima *	Casuarina equisetifolia
Amphicarpum muhlenbergianum !		Bauhinia purpurea	Casuarina glauca
Amyris elemifera		Bauhinia variegata	Catharanthus roseus
Anagallis minima *		Beadlea cranichoides *	Catopsis berteroniana
Anagallis pumila *!	✓	Bejaria racemosa	Catopsis floribunda
Ananas comosus *C		Berchemia scandens	Celtis laevigata
Andropogon glomeratus var. glaucopsis*		Bidens alba var. radiata !!	Cenchrus echinatus *
Andropogon glomeratus var. hirsutior		Bigelovia nudata subsp. australis	Cenchrus gracillimus*!
Andropogon glomeratus var. pumilus	✓	Bischofia javanica	Cenchrus incertus
Andropogon gyrans	✓	Blechnum serrulatum !!	Centella asiatica
Andropogon longiberbis		Blechnum pyramidatum	Centrosema virginianum
Andropogon ternarius		Bletia purpurea	Cephalanthus occidentalis
Andropogon virginicus	✓	Blutaparon vermiculare *!	Ceratophyllum demersum
Andropogon virginicus var. decipiens		Boehmeria cylindrica !!	Ceratopteris thalictroides
Andropogon virginicus var. glaucus	✓	Boerhavia diffusa	Cestrum diurnum *!
Anemia adiantifolia		Boltonia diffusa	Chamaecrista deeringiana *
Angadenia berteroi !		Borrchia frutescens *!	Chamaecrista fasciculata !!
Annanas comosus C		Bothriochloa ischaemum var. songarica!+	Chamaecrista nictitans var. aspera
Annona glabra		Bothriochloa pertusa	Chamaesyce blodgettii !!
		Brassica rapa	Chamaesyce conferta !

Amaranthus spinosus - voodooed

Next cell: 511356

2904077 in 1000 bed

AYOI

Eragrostis hypnoides, hundreds of plants voodooed

63086
63087

	Chamaesyce hirta !!		Croton glandulosus var. glandulosus *!		Digitaria violascens!
	Chamaesyce hypericifolia		Croton humilis !	✓	Diodia virginiana
	Chamaesyce hyssopifolia !		Ctenitis sloanei		Dioscorea bulbifera
	Chamaesyce lasiocarpa	✓	Cuphea carthagenensis !		Dioscorea sansibarensis
	Chamaesyce mendezii		Cuscuta pentagona !		Diospyros virginiana
	Chamaesyce ophthalmica		Cyclosporum leptophyllum *!		Distichlis spicata *
	Chamaesyce pergamena		Cynanchum angustifolium *		Dodonaea angustifolia*
	Chamaesyce porteriana		Cynanchum blodgettii		Dracaena marginata C*
	Chaptalia tomentosa		Cynanchum scoparium		Drosera brevifolia
	Chiococca alba	✓	Cynodon dactylon!		Drosera capillaris
	Chiococca parvifolia		Cyperus articulatus !		Drymaria cordata*!
	Chlorophytum comosum *	✓	Cyperus compressus		Drypetes lateriflora
	Chromolaena odorata *	✓	Cyperus croceus		Dypsis lutescens *
	Chrysobalanus icaco		Cyperus distinctus		Dyschoriste angusta
	Chrysophyllum oliviforme		Cyperus esculentus		Dyschoriste oblongifolia*!
	Chrysopogon pauciflorus	✓	Cyperus flavescens !!		Echinochloa colona !
	Chrysopsis mariana *!		Cyperus haspan		Echinochloa crus-galli
	Chrysopsis subulata		Cyperus involucreatus		Echinochloa muricata!
	Cirsium horridulum		Cyperus ligularis		Echinochloa paludigena
✓	Cirsium nuttallii		Cyperus odoratus !		Echinochloa walteri
	Cissua verticillata		Cyperus planifolius		Echinodorus berteroi
	Citharexylum spinosum !	✓	Cyperus polystachyos!!	✓	Eclipta prostrata
✓	Citrus aurantium ^{Sour orange.}		Cyperus prolifer *		Eichhornia crassipes
✓	Citrus limon (SP) ✓		Cyperus pumilus		Eleocharis albida
	Citrus sinensis		Cyperus retrorsus !!		Eleocharis atropurpurea
✓	Citrus xparadisii		Cyperus rotundus *		Eleocharis baldwinii!
✓	Cladium jamaicense	✓	Cyperus surinamensis !!		Eleocharis cellulosa !!
	Clematis baldwinii !		Cyperus tetragonus*!		Eleocharis elongata
	Clerodendrum chinense *!		Cyrtopodium punctatum		Eleocharis flavescens
	Clerodendrum indicum *		Dactyloctenium aegyptium !!	✓	Eleocharis geniculata !
	Clerodendrum speciosissimum *		Dalbergia ecastophyllum *		Eleocharis interstincta
	Clitoria mariana		Dalbergia sissoo		Elephantopus elatus !!
	Cnidioscolus stimulosus		Dalea camea !!	✓	Eleusine indica !!
	Coccoloba diversifolia!		Dalea carthagenensis var. floridana		Elionurus tripsacoides !
	Coccoloba uvifera *		Delonix regia *		Elytraria caroliniensis var. angustifolia !!
	Cocos nucifera *		Desmodium floridanum		Emilia fosbergii*!
	Codiaeum variegatum var. pictum	✓	Desmodium incanum !!		Encyclia cochleata
	Coelorrachis rugosa !!		Desmodium paniculatum		Encyclia tampensis
	Coleus pumilus		Desmodium tortuosum		Epipremnum pinnatum *
	Colocasia esculenta		Desmodium triflorum		Epidendrum anceps !
	Colubrina arborescens		Desmodium viridiflorum		Epidendrum difforme
	Commelina caroliniana *!		Dichantherium aciculare		Epidendrum nocturnum
✓	Commelina diffusa var. diffusa !	✓	Dichantherium commutatum !!		Epidendrum rigidum
	Commelina erecta	✓	Dichantherium dichotomum !		Equisetum hyemale var. affine
	Conocarpus erectus !		Dichantherium ensifolium !	✓	Eragrostis atrovirens!
✓	Conoclinium coelestinum !!		Dichantherium ensifolium var. unciphyllum!		Eragrostis bahiensis
✓	Conyza canadensis var. pusilla		Dichantherium erectifolium !!		Eragrostis ciliaris !
	Corchorus hirtus*		Dichantherium laxiflorum *!		Eragrostis eliottii
	Corchorus siliquosus		Dichantherium leucothrix *!		Eragrostis hypnoides*!
	Cordia globosa		Dichantherium ovale		Eragrostis secundiflora ssp. oxylepis *!
	Coreopsis leavenworthii		Dichantherium portoricense		Eragrostis spectabilis !
	Cornus foemina		Dichantherium strigosum var. glabrescens		Eragrostis virginica *!
	Costus spicatus *		Dichanthium aristatum*!+	✓	Erechtites hieracifolia
	Crassocephalum crepidioides *!		Dichondra carolinensis !	✓	Eremochloa ophiuroides !!
	Crinum americanum		Dichondra micrantha	✓	Erigeron quercifolius
✓	Crotalaria lanceolata !!		Dicliptera sexangularis		Erigeron vernus !
	Crotalaria pallida var. obovata		Digitaria ciliaris *!+		Eriobotrya japonica
	Crotalaria pumila*!		Digitaria filiformis var. filiformis* !		Eriocaulon compressum
	Crotalaria rotundifolia	✓	Digitaria longiflora		Eriocaulon decangulare !
	Crotalaria spectabilis		Digitaria pauciflora *!		Eriocaulon ravenellii !

Chenopodium = ambrosioides. - vouchered

	<i>Eriochloa michauxii</i> var. <i>michauxii</i> *		<i>Grevillea robusta</i>		<i>Ipomoea alba</i>
	<i>Erucastrum gallicum</i>		<i>Guzmania monostachia</i>		<i>Ipomoea batatas</i>
	<i>Eryngium baldwinii</i>		<i>Gymnopogon brevifolius</i>		<i>Ipomoea cordatotriloba</i> !
	<i>Eryngium yuccifolium</i>		<i>Gymnopogon chapmanianus</i>		<i>Ipomoea indica</i> var. <i>acuminata</i>
	<i>Erythrina herbacea</i>		<i>Habenaria floribunda</i>		<i>Ipomoea sagittata</i>
	<i>Erythrodes querceticola</i> !		<i>Habenaria nivea</i> !		<i>Ipomoea triloba</i>
	<i>Eugenia axillaris</i>		<i>Habenaria quinqueseta</i>		<i>Iresine diffusa</i>
	<i>Eugenia foetida</i> *		<i>Habenaria repens</i>	✓	<i>Iris hexagona</i>
	<i>Eugenia uniflora</i>		<i>Hamelia patens</i>		<i>Isoetes flaccida</i> !
	<i>Eulophia alta</i>		<i>Harrisella filiformis</i> !	✓	<i>Iva microcephala</i> !!
✓	<i>Eupatorium capillifolium</i>		<i>Hedychium coronarium</i> *!		<i>Ixora coccinea</i>
✓	<i>Eupatorium leptophyllum</i>		<i>Hedyotis procumbens</i> !		<i>Jacquemontia curtisii</i>
	<i>Eupatorium mikanioides</i> !!		<i>Hedyotis uniflora</i>		<i>Jacquemontia pentanthos</i> !
	<i>Eupatorium mohrii</i> !!		<i>Helenium amarum</i> !		<i>Jasminum multiflorum</i> *
	<i>Eupatorium rotundifolium</i> !!		<i>Helenium pinnatifidum</i>	✓	<i>Juncus marginatus</i> !
	<i>Eupatorium serotinum</i>		<i>Helianthus angustifolius</i>	✓	<i>Juncus megacephalus</i>
	<i>Euphorbia graminea</i> *!		<i>Helianthus annuus</i> *		<i>Juncus polycephalus</i>
	<i>Euphorbia polyphylla</i>		<i>Helianthus radiata</i>		<i>Juncus repens</i> !!
	<i>Eustachys glauca</i>		<i>Heliotropium angiospermum</i> *!+		<i>Juncus roemerianus</i>
	<i>Eustachys petraea</i> !!		<i>Heliotropium curassavicum</i> *!		<i>Juncus scirpoides</i> *
	<i>Eustoma exaltatum</i>		<i>Heliotropium polyphyllum</i>		<i>Juncus trigonocarpus</i>
	<i>Euthamia caroliniana</i>		<i>Heteropogon contortus</i> !	✓	<i>Justicia angusta</i> !
	<i>Evolvulus alsinoides</i> *!		<i>Heteropogon melanocarpus</i>		<i>Kalanchoe pinnata</i> !
	<i>Evolvulus sericeus</i> !		<i>Heterotheca subaxillaris</i>		<i>Kalanchoe tubiflora</i>
	<i>Exothea paniculata</i>		<i>Hibiscus coccineus</i> *		<i>Kigelia pinnata</i>
	<i>Ficus altissima</i> *		<i>Hibiscus grandiflorus</i> !		<i>Kosteletzkya virginica</i>
✓	<i>Ficus aurea</i> !!		<i>Hibiscus poeppigii</i> !		<i>Krugiodendron ferreum</i>
	<i>Ficus benjamina</i> * C		<i>Hibiscus rosa-sinensis</i> var. <i>schizopetalus</i>	✓	<i>Kyllinga brevifolia</i> !
	<i>Ficus citrifolia</i> !!		<i>Hibiscus tiliaceus</i>		<i>Lachnanthes carolina</i> *!+
	<i>Ficus microcarpa</i> *		<i>Hieracium megacephalon</i> *		<i>Lachnocaulon anceps</i>
✓	<i>Fimbristylis autumnalis</i> !		<i>Hippocratea volubilis</i>		<i>Lachnocaulon engleri</i> *!
	<i>Fimbristylis caroliniana</i>		<i>Hydrilla verticillata</i>		<i>Lactuca floridana</i> *!
✓	<i>Fimbristylis cymosa</i> !!		<i>Hydrocotyle bonariensis</i>		<i>Lactuca graminifolia</i> *!
	<i>Fimbristylis dichotoma</i> *!+	✓	<i>Hydrocotyle umbellata</i>		<i>Laguncularia racemosa</i> !
	<i>Fimbristylis miliacea</i> *!		<i>Hydrocotyle verticillata</i>		<i>Lantana camara</i>
	<i>Fimbristylis schoenoides</i>	✓	<i>Hydrolea corymbosa</i> !!		<i>Lantana depressa</i> var. <i>sahibensis</i> *!
	<i>Fimbristylis spadicea</i> !		<i>Hylocereus undatus</i> *		<i>Lantana involucrata</i>
	<i>Flaveria linearis</i> !!		<i>Hymenocallis palmeri</i>		<i>Lasiacis divaricata</i> !
	<i>Forestiera segregata</i>		<i>Hyperbarrhenia rufa</i>		<i>Lechea sessiliflora</i> *!+
	<i>Fraxinus caroliniana</i> !!	✓	<i>Hypericum brachyphyllum</i> !		<i>Leersia hexandra</i> !!
	<i>Fuirena breviseta</i> !!		<i>Hypericum distifolium</i> !!		<i>Lemna obscura</i> !
	<i>Fuirena scirpoidea</i> !!		<i>Hypericum crux-andreae</i> !		<i>Lemna valdiviana</i> *!
	<i>Furcraea selloa</i>		<i>Hypericum fasciculatum</i> *!	✓	<i>Lepidium virginicum</i>
	<i>Galactia elliotii</i>	✓	<i>Hypericum hypericoides</i>		<i>Leptochloa fascicularis</i> !
	<i>Galactia regularis</i>	✓	<i>Hypericum mullum</i> *!		<i>Leucaena leucocephala</i>
	<i>Galactia striata</i> !		<i>Hypericum punctatum</i> *!		<i>Liatris garberi</i>
	<i>Galactia volubilis</i> !		<i>Hypericum tetrapetalum</i>		<i>Liatris gracilis</i>
	<i>Galium hispidulum</i> *!		<i>Hypoxis juncea</i>		<i>Liatris graminifolia</i>
	<i>Galium tinctorium</i> *!		<i>Hypoxis wrightii</i> !		<i>Liatris pauciflora</i>
	<i>Gaura angustifolia</i>	✓	<i>Hyptis alata</i> !!		<i>Liatris spicata</i>
	<i>Glandularia maritima</i>		<i>Hyptis mutabilis</i>		<i>Licania michauxii</i>
✓	<i>Gnaphalium falcatum</i> !		<i>Hyptis pectinata</i>		<i>Lilium catesbaei</i> !!
	<i>Gnaphalium obtusifolium</i>		<i>Hyptis verticillata</i>		<i>Limonium carolinianum</i> *
	<i>Gnaphalium pennsylvanicum</i>		<i>Ilex cassine</i> !!		<i>Limnobium spongia</i> *
	<i>Gnaphalium purpureum</i>		<i>Ilex glabra</i> !	✓	<i>Limnophila sessiliflora</i>
	<i>Gomphrena serrata</i>		<i>Imperata brasiliensis</i> !!	✓	<i>Linaria canadensis</i> *!
	<i>Gossypium hirsutum</i> *!		<i>Imperata cylindrica</i>		<i>Lindernia crustacea</i>
	<i>Gouania lupuloides</i>		<i>Indigofera hirsuta</i> *		<i>Lindernia dubia</i> var. <i>anagallidea</i>
	<i>Gratiola pilosa</i> *!		<i>Indigofera spicata</i>	✓	<i>Lindernia grandiflora</i> !
	<i>Gratiola ramosa</i>		<i>Ionopsis utricularioides</i>		<i>Linum carteri</i> var. <i>smallii</i>

Hymenachne amplexicaulis - sterile

	Linum floridanum		Morus alba		Paspalum blodgettii
	Linum medium var. texanum!	✓	Morus rubra		Paspalum caespitosum !!
	Liparis nervosa		Mucuna pruriens *		Paspalum conjugatum!
✓	Livistona chinensis *C		Muhlenbergia capillaris		Paspalum dissectum *!
	Lobelia feayana		Murdannia nudiflora		Paspalum distichum
	Lobelia glandulosa		Murdannia spirata		Paspalum fimbriatum
	Lobelia homophylla		Musa xparadiasiaca		Paspalum floridanum!
	Lobelia paludosa !		Myrcianthes fragrans		Paspalum laeve *!
✓	Ludwigia alata!	✓	Myrica cerifera		Paspalum monostachyum
✓	Ludwigia curtissii		Myriophyllum aquaticum		Paspalum notatum
	Ludwigia erecta		Myriophyllum heterophyllum		Paspalum praecox*!
✓	Ludwigia maritima !!		Myriophyllum pinnatum		Paspalum repens
✓	Ludwigia microcarpa !!		Najas guadalupensis	✓	Paspalum setaceum
✓	Ludwigia octovalvis		Najas marina !		Paspalum urvillei !
✓	Ludwigia peruviana		Najas wrightiana		Paspalum vaginatum *!
✓	Ludwigia repens !		Nelumbo lutea		Passiflora pallens !
	Ludwigia suffruticosa		Neoregelia sp. C*	✓	Passiflora suberosa
	Lycium carolinianum		Nephrolepis biserrata !!		Pecluma ptilodon var. caespitosa *
	Lycopersicon esculentum *		Nephrolepis cordifolia *!		Pectis glaucescens
	Lycopodiella cernua *!	✓	Nephrolepis exaltata !!		Pectis prostrata
	Lycopus rubellus		Nephrolepis falcata forma furcans *!		Pectis xflorida*!
	Lygodium microphyllum		Nephrolepis multiflora!		Peltandra virginica !
	Lyonia fruticosa		Neptunia pubescens *!		Pennisetum purpureum
	Lyonia lucida		Neyraudia reynaudiana		Penstemon multiflorus
	Lysiloma latisiliquum		Nicotiana tabacum		Pentalinon luteum
	Lythrum alatum var. lanceolatum !!		Nuphar lutea subsp. advena !	✓	Pentodon pentandrus!
	Lythrum lineare	✓	Nymphaea elegans (sp.) =		Peperomia alata
	Macroptilium atropurpureum		Nymphaea lotus		Peperomia glabella
	Macroptilium lathyroides		Nymphaea odorata		Peperomia obtusifolia !
	Magnolia grandiflora		Nymphoides aquatica		Peperomia rotundifolia
	Magnolia virginiana !		Ocimum campechianum		Persea americana
	Malachra urens		Ocotea coriacea		Persea borbonia
	Malaxis spicata		Oeceoclades maculata	✓	Persea palustris
	Malvastrum corchorifolium *		Oenothera humifusa		Petiveria alliacea *!
	Malvaviscus arboreus var. drummondii !		Oenothera laciniata*		Phanopyrum gymnocarpon !*
	Mangifera Indica		Oncidium ensatum *	✓	Phlebodium aureum !!
	Maxillaria crassifolia		Ophioglossum palmatum !		Phlox drummondii
	Mecardonia acuminata ssp. peninsularis !!		Ophioglossum petiolatum !		Phoenix dactylifera C*
	Mecardonia procumbens!	✓	Opismenus hirtellus !!		Phoenix sp. *
	Medicago lupulina*!		Opuntia humifusa		Phoradendron leucarpum
	Melaleuca quinquevervia		Opuntia stricta *		Phragmites australis
	Melaleuca viminalis		Osmunda regalis var. spectabilis	✓	Phyla nodiflora !!
	Melanthera angustifolia!	✓	Oxalis comiculata !		Phyla stoechadifolia*!
	Melanthera parvifolia		Oxalis debilis var. corymbosa*		Phyllanthus amarus *!
	Melanthera nivea		Oxypolis filiformis !!		Phyllanthus carolinensis subsp. saxicola
	Melilotus albus		Palafoxia feayi		Phyllanthus tenellus *
	Melochia pyramidata		Pandanus sp. C*		Phyllanthus urinaria !
	Melochia spicata		Panicum dichotomiflorum !		Phymatosorus scolopendrium C *
	Melothria pendula !!		Panicum dichotomiflorum var. bartowense		Physalis angulata *
	Metopium toxiferum	✓	Panicum hemitomon		Physalis angustifolia
	Micranthemum glomeratum !		Panicum hians!		Physalis pubescens !
	Micranthemum umbrosum *!		Panicum maximum *!		Physalis walteri
	Microgramma heterophylla !	✓	Panicum repens !!		Physostegia purpurea!
✓	Mikania cordifolia	✓	Panicum rigidulum !		Phytolacca americana !
✓	Mikania scandens	✓	Panicum tenerum !		Pilea microphylla!
	Mitreola petiolata !!		Panicum virgatum		Piloblephis rigida
✓	Mitreola sessilifolia	✓	Parietaria floridana !		Pinguicula lutea
	Momordica charantia * !!		Parthenium hysterophorus *!		Pinguicula pumila
	Monanthochloe littoralis	✓	Parthenocissus quinquefolia		Pinus elliottii var. densa
	Monstera deliciosa C*		Paspalidium geminatum!		Piper aduncum!

	Piriqueta caroliniana !!		Quercus pumila		Sagittaria filiformis
	Piscidia piscipula C*	✓	Quercus virginiana		Sagittaria graminea!
	Pisonia aculeata		Quesnelia quesnelloides C*	✓	Sagittaria graminea var. chapmanii
	Pistia stratiotes !!		Randia aculeata	✓	Sagittaria lancifolia
	Pithecellobium unguis-cati	✓	Rapanea punctata !!	✓	Salix caroliniana
	Pityopsis graminifolia		Reimarochloa oligostachya		Salvia lyrata !
	Pityrogramma trifoliata		Rhabdadenia biflora		Salvia occidentalis
	Plantago major!		Rhapis excelsa		Salvinia minima !!
	Plantago virginica *!		Rhexia cubensis		Sambucus canadensis
✓	Pleopeltis polypodioides var. michauxiana !!		Rhexia mariana !!		Samolus ebracteatus
✓	Pluchea carolinensis		Rhexia nashii	✓	Samolus valerandi subsp. parviflorus
✓	Pluchea odorata		Rhexia nuttallii		Sansevieria hyacinthoides*
✓	Pluchea rosea !!		Rhexia petiolata *!	✓	Sapindus saponaria !
	Plumbago scandens		Rhizophora mangle	✓	Sarcostemma clausum
	Poinsettia cyathophora *!		Rhus copallinum !!		Saururus cernuus
	Poinsettia heterophylla		Rhynchelytrum repens	✓	Schefflera actinophylla
	Polygala baldunii		Rhynchosia minima	✓	Schinus terebinthifolius
	Polygala boykinii		Rhynchosia swartzii*		Schizachyrium gracile *!
	Polygala cruciata		Rhynchospora breviseta		Schizachyrium rhizomatum
	Polygala grandiflora !!		Rhynchospora chapmanii		Schizachyrium sanguineum
	Polygala incarnata	✓	Rhynchospora colorata !!		Schizaea pennula *!
	Polygala lutea		Rhynchospora comiculata!		Schoenolirion albiflorum
	Polygala nana !	✓	Rhynchospora divergens		Schoenus nigricans
	Polygala polygama !		Rhynchospora fascicularis !		Schoepfia chrysophylloides
	Polygala rugelii		Rhynchospora globularis		Scirpus tabernaemontani !
	Polygala setacea		Rhynchospora intermedia		Scleria baldwinii
	Polygala verticillata var. isocycla*!		Rhynchospora inundata		Scleria ciliata var. ciliata!
	Polygonum densiflorum	✓	Rhynchospora microcarpa!		Scleria georgiana!
✓	Polygonum hydropiperoides!	✓	Rhynchospora miliacea !!		Scleria hirtella !
✓	Polygonum punctatum		Rhynchospora nitens		Scleria lithosperma *!
	Polygonum setaceum		Rhynchospora odorata !		Scleria reticularis
✓	Polyprum procumbens !!		Rhynchospora tracyi !!		Scleria triglomerata!
	Polyradicum lindenii		Richardia grandiflora		Scleria verticillata !
	Polystachya concreta		Richardia scabra		Scoparia dulcis !!
✓	Pongamia pinnata		Ricinus communis !	✓	Senecio glabellus !
✓	Pontederia cordata !!		Rivina humilis !	✓	Senna alata
	Ponthieva racemosa	✓	Rorippa teres!	✓	Senna ligustrina
	Portulaca oleracea!		Rotala ramosior		Senna obtusifolia
	Portulaca pilosa		Rottboellia cochinchinensis		Senna pendula var. glabrata
	Portulaca rubricaulis		Roystonea regia		Serenoa repens
	Potamogeton illinoensis !		Rubus trivialis		Sesbania herbacea
✓	Pouzolzia zeylanica *!		Rudbeckia hirta !!		Sesbania vesicaria
✓	Proserpinaca palustris		Ruellia caroliniensis		Sesuvium portulacastrum
✓	Pseudelephantopus spicatus !!*		Ruellia succulenta		Setaria corrugata
✓	Psidium guajava		Ruellia tweediana		Setaria magna
	Psilotum nudum !!		Rumex verticillatus		Setaria parviflora !!
✓	Psychotria nervosa		Ruppia maritima !		Seymeria pectinata !
✓	Psychotria sulzneri		Russelia equisetiformis C*	✓	Sida acuta
✓	Pteridium aquilinum var. caudatum	✓	Sabal palmetto!		Sida cordifolia
✓	Pteridium aquilinum var. pseudocaudatum !!		Sabatia bartramii!		Sida elliptica
	Pteris bahamensis		Sabatia brevifolia	✓	Sida rhombifolia
	Pteris tripartita		Sabatia calycina		Sida spinosa *
	Pteris vittata !!		Sabatia grandiflora		Sideroxylon celastrinum *!
	Pteris xdelchampsii	✓	Sabatia stellaris		Sideroxylon foetidissimum
✓	Pterocaulon pycnostachyum		Saccharum giganteum		Sideroxylon reclinatum ssp. reclinatum !
✓	Ptilimnium capillaceum !		Saccharum officinarum		Sideroxylon salicifolium
	Quercus chapmanii *!		Sacciolepis indica !!		Simarouba glauca
✓	Quercus geminata		Sacciolepis striata	✓	Sisyrinchium angustifolium
✓	Quercus laurifolia		Saccola lanceolata		Sisyrinchium nashii*
	Quercus minima!		Sageretia minutiflora !+		Sisyrinchium rosulatum

✓ Smilax auriculata	Terminalia catappa *	Vernonia blodgettii
✓ Smilax bona-nox !	Teucrium canadense	Vernonia cinerea *!
✓ Smilax laurifolia !!	Thalia geniculata	Viburnum obovatum
Smilax tamnoides *!	Thelypteris dentata *!	✓ Vicia acutifolia
Solanum americanum	Thelypteris hispida var. versicolor	Vigna luteola
Solanum capsicoides*	Thelypteris interrupta	Viola lanceolata
Solanum erianthum	✓ Thelypteris kunthii!	Viola palmata *!
Solanum verbascifolium	Thelypteris ovata!	Viola sororia *!
✓ Solanum viarum	Thelypteris palustris var. pubescens !!	Vitex trifoliata *C
Solidago fistulosa !!	Thelypteris reticulata	Vitis aestivalis
Solidago gigantea	Thespesia populnea *!	✓ Vitis cinerea var. floridana
Solidago odora var. chapmanii !	Thevetia peruviana *	Vitis rotundifolia
Solidago sempervirens	✓ Tillandsia balbisiana !!	✓ Vitis shuttleworthii
Solidago stricta !!	✓ Tillandsia fasciculata var. densispica	✓ Vittaria lineata !!
✓ Solidago tortifolia!	Tillandsia flexuosa !	Walteria indica !!
Sonchus asper *!	Tillandsia paucifolia	Washingtonium robusta *
Sophora tomentosa var. truncata C*	Tillandsia pruinosa	Wedelia trilobata !!
Sorghastrum secundum *!	✓ Tillandsia recurvata!	Wolffia columbiana *
Sorghum arundinaceum * !	✓ Tillandsia setacea !!	Wolffiella oblonga !
Spartina bakeri !	✓ Tillandsia usneoides	Woodwardia areolata
✓ Spathodea campanulata *	✓ Tillandsia utriculata	Woodwardia virginica
✓ Spermacece assurgens !!	✓ Tillandsia variabilis	Xyris americana
Spermacece floridana	Tillandsia xsmalliana	✓ Xyris ambigua !!
Spermacece prostrata !	Tournefortia hirsutissima	✓ Xyris calcicola *!
Spermacece terminalis	Tournefortia volubilis	Xyris caroliniana *!
Spermacece tetraquetra *!	✓ Toxicodendron radicans	Xyris difformis var. floridana
✓ Spermacece verticillata !!	Tradescantia spathacea	Xyris elliottii
Spigelia anthelmia *!	Tradescantia zebrina	Xyris flabelliformis !
Spiranthes brevilabris	Trema micranthum	Xyris jupical
Spiranthes cernua	Trichomanes holopterum	Xyris smalliana *
Spiranthes laciniata !	Trichostema dichotomum	Youngia japonica !
Spiranthes longilabris	Trichostigma octandrum	Yucca aloifolia *
Spiranthes odorata	Tridax procumbens	Zanthoxylum fagara
Spiranthes torta	Triphora gentianoides	Zea mays subsp. mexicana
Spiranthes vernalis !	Tripsacum dactyloides	Zephyranthes simpsonii
Spirodela polyrhiza*!	Tripsacum floridanum	Zeuxine strateumatica !
Sporobolus domingensis	Turbina corymbosa	Zizaniopsis miliacea !
Sporobolus indicus	Turnera ulmifolia *!	Zoysia matrella var. tenuifolia !+
✓ Sporobolus indicus var. pyramidalis !!	Typha domingensis	
Sporobolus junceus !	Typha latifolia	Bold = needs to be collected
Sporobolus pyramidatus	✓ Urena lobata !!	* =not on Muss et al.
Sporobolus virginicus *	Urochloa fasciculata var. reticulata	! =collected by IRC
Stachytarpheta jamaicensis	Urochloa mutica	!! =collected by IRC for addendum
Stenandrium dulce	Urochloa ramosa	+ =collected again by IRC for documentation
Stenochlaena tenuifolia	Utricularia cornuta	C = Cultivated Only
Stenotaphrum secundatum	Utricularia foliosa	
Stillingia aquatica !!	Utricularia gibba	
Stillingia sylvatica !!	Utricularia inflata	Total taxa = 1055
Stylosanthes hamata !	Utricularia purpurea	1055
Suaeda linearis *	Utricularia radiata	
Syagrus romanzoffiana *	Utricularia resupinata !	
Syngonium angustatum!	Utricularia simulans	
✓ Syngonium podophyllum	Utricularia subulata	
✓ Syzygium cumini	Vaccinium darrowii	
Syzygium jambos	Vaccinium myrsinites !	
Tabebuia aurea	Vanilla phaeantha	
✓ Taxodium ascendens	Verbena bonariensis	
Taxodium distichum	✓ Verbena brasiliensis *!	
Tectaria heracleifolia	✓ Verbena scabra!	
Tephrosia spicata*!	Verbesina virginica	

Urochloa subquadrifera - vouchered
0510610 → pasture next to cattle pond
2903696

Big Cypress NP Data Sheets					
Date:	5/20/04				
County:	Collier				
Region:	NE corner of preserve				
Cell #	AX08	Point #			
Transect #1					
Heading (deg.):	330°				
Origin coordinates:	0510627	2903700			
End coordinates:	0510482	2903896			
Species on line	Panirepe	Bacocaro			
	Hypermute	Lindgran			
	Ptilcapri	Lobe Feay			
	Bacomani	Eleo geni			
	Cuphrast	Oxal corn			
	Ludwrepe	Xyricalc			
	Hypermute	Rhyn dive			
	Dioduirc	Ludw micr			
	Centasia	Ludw repe			
	Astesuby	Erig qder			
	Phyl nodi	My ficen			
	Axon furc	Mit peti			
	Polypunc	Pont cord			
	Linarana				
	Pontcord				
Quad. 2.5 m Intercept 1 (2.5)	Ludw repe Panarepe				
Quad. 2.5 m Intercept 2 (5)	Bacomani Ludw repe				
Quad. 2.5 m Intercept 3 (7.5)	Dioduirc Panirepens				
Quad. 2.5 m Intercept 4 (10)	Phyl nodi Panirepen				
Quad. 2.5 m Intercept 5 (12.5)	P. repe Dioduirc				
Quad. 2.5 m Intercept 6 (15)	Centasia P. repe				
Quad. 2.5 m Intercept 7 (17.5)	P. repe				
Quad. 2.5 m Intercept 8 (20)	Hypermute P. repe	Phyl nodi			
Quad. 2.5 m Intercept 9 (22.5)	Panirepe				

Quad. 2.5 m Intercept10 (25)	Ptil capi P. repe			
Quad. 2.5 m Intercept11 (27.5)	P. repe			
Quad. 2.5 m Intercept12 (30)	Panirepe			
Quad. 2.5 m Intercept13 (32.5)	Centasia P. repe			
Quad. 2.5 m Intercept14 (35)	P. repe			
Quad. 2.5 m Intercept15 (37.5)	P. repe			
Quad. 2.5 m Intercept16 (40)	P. repe			
Quad. 2.5 m Intercept17 (42.5)	P. repe Bacomann			
Quad. 2.5 m Intercept18 (45)	Baccaro Hyperuti	P. repe		
Quad. 2.5 m Intercept19 (47.5)	P. repe Dioding	Hyperuti		
Quad. 2.5 m Intercept20 (50)	P. repe.			
Quad. 2.5 m Intercept21 (2.5)	Panirepe Hyperuti	Dioding		
Quad. 2.5 m Intercept22 (5)	Panirepe			
Quad. 2.5 m Intercept23 (7.5)	Panirepe Lindgrand.			
Quad. 2.5 m Intercept24 (10)	Panirepe			
Quad. 2.5 m Intercept25 (12.5)	Panirepe			
Quad. 2.5 m Intercept26 (15)	Panirepe Phylodi			
Quad. 2.5 m Intercept27 (17.5)	Bacomann			
Quad. 2.5 m Intercept28 (20)	Panirepe Dioding	Elegan.		
Quad. 2.5 m Intercept29 (22.5)	Bacomann Baccaro			
Quad. 2.5 m Intercept30 (25)	Panirepe			
Quad. 2.5 m Intercept31 (27.5)	Panirepe			
Quad. 2.5 m Intercept32 (30)	Panirepe Bacomann			
Quad. 2.5 m Intercept33 (32.5)	Panirepe Bacomann			

Quad. 2.5 m Intercept34 (35)	Bacomann Panirepe			
Quad. 2.5 m Intercept35 (37.5)	Panirepe Bacoloro			
Quad. 2.5 m Intercept36 (40)	Centasia Panirepe			
Quad. 2.5 m Intercept37 (42.5)	Panirepe			
Quad. 2.5 m Intercept38 (45)	Panirepe Eleogeni			
Quad. 2.5 m Intercept39 (47.5)	Panirepe Eleogeni			
Quad. 2.5 m Intercept40 (50)	Centasia Panirepe	Eleogeni		
Quad. 2.5 m Intercept41 (2.5)	Bacomann			
Quad. 2.5 m Intercept42 (5)	Panirepe			
Quad. 2.5 m Intercept43 (7.5)	Panirepe Eleogeni			
Quad. 2.5 m Intercept44 (10)	Panirepe			
Quad. 2.5 m Intercept45 (12.5)	Panirepe Centasia	Eleogeni		
Quad. 2.5 m Intercept46 (15)	Centasia Eleogeni			
Quad. 2.5 m Intercept47 (17.5)	Centasia Panirepe			
Quad. 2.5 m Intercept48 (20)	Phylmodi			
Quad. 2.5 m Intercept49 (22.5)	Panirepe			
Quad. 2.5 m Intercept50 (25)	Bacomann Panirepe			
Quad. 2.5 m Intercept51 (27.5)	Panirepe			
Quad. 2.5 m Intercept52 (30)	Panirepe			
Quad. 2.5 m Intercept53 (32.5)	Centasia Panirepe			
Quad. 2.5 m Intercept54 (35)	Bacomann			
Quad. 2.5 m Intercept55 (37.5)	Ludwimer Ludwrepe	Eleogeni		
Quad. 2.5 m Intercept56 (40)	Ludwrepe Panirepe			
Quad. 2.5 m Intercept57 (42.5)	Bacomann Panirepe			

Quad. 2.5 m Intercept58 (45)	P.				
	Bacomon				
Quad. 2.5 m Intercept59 (47.5)	Ludwige				
	Centasia				
Quad. 2.5 m Intercept60 (50)	Bacomon				
Quad. 2.5 m Intercept61 (2.5)	Panirepe				
Quad. 2.5 m Intercept62 (5)	Panirepe				
	Centasia				
Quad. 2.5 m Intercept63 (7.5)	Panirepe				
	PhylloD.				
Quad. 2.5 m Intercept64 (10)	Bacomon				
	Bledgeri				
Quad. 2.5 m Intercept65 (12.5)	Panirepe				
	Diddling				
Quad. 2.5 m Intercept66 (15)	Panirepe				
	Centasia				
Quad. 2.5 m Intercept67 (17.5)	Panirepe				
Quad. 2.5 m Intercept68 (20)	Bacomon				
	Diddling				
Quad. 2.5 m Intercept69 (22.5)	Bacomon				
Quad. 2.5 m Intercept70 (25)	Panirepe				
Quad. 2.5 m Intercept71 (27.5)	Bacomon				
	Centasia				
Quad. 2.5 m Intercept72 (30)	Bacomon				
Quad. 2.5 m Intercept73 (32.5)	Panirepe				
Quad. 2.5 m Intercept74 (35)	Panirepe				
Quad. 2.5 m Intercept75 (37.5)	Panirepe				
Quad. 2.5 m Intercept76 (40)	Bacomon				
Quad. 2.5 m Intercept77 (42.5)	Bacomon				
	Panirepe				
Quad. 2.5 m Intercept78 (45)	Panirepe				
Quad. 2.5 m Intercept79 (47.5)	Panirepe				
	Centasia				
Quad. 2.5 m Intercept80 (50)	Panirepe				
	Bacomon				
Quad. 2.5 m Intercept81 (2.5)	P				
	Ludwige				

Quad. 2.5 m Intercept82 (5)	P Ludw. m. cr			
Quad. 2.5 m Intercept83 (7.5)	P Centasia			
Quad. 2.5 m Intercept84 (10)	Centasia			
Quad. 2.5 m Intercept85 (12.5)	Centasia P			
Quad. 2.5 m Intercept86 (15)	Centasia P			
Quad. 2.5 m Intercept87 (17.5)	P			
Quad. 2.5 m Intercept88 (20)	Phyl nod. Ekeogeni			
Quad. 2.5 m Intercept89 (22.5)	Mitropeti			
Quad. 2.5 m Intercept90 (25)	P Ekeogeni			
Quad. 2.5 m Intercept91 (27.5)	P			
Quad. 2.5 m Intercept92 (30)	P. l. Ludw. rpe			
Quad. 2.5 m Intercept93 (32.5)	P Centasia			
Quad. 2.5 m Intercept94 (35)	P.			
Quad. 2.5 m Intercept95 (37.5)	P.			
Quad. 2.5 m Intercept96 (40)	P. Centasia	Ländgren		
Quad. 2.5 m Intercept97 (42.5)	P. Centasia			
Quad. 2.5 m Intercept98 (45)	Hypomiti Pari rpe			
Quad. 2.5 m Intercept99 (47.5)	P.			
Quad. 2.5 m Intercept100 (50)	Pari rpe Ludw. rpe			

Big Cypress NP Data Sheets

Date: 5/20/04

County: Collier

Region: NE corner

Cell # AX02

Point #

Transect #2

Heading (deg.): 160°

Origin coordinates:

End coordinates: 0510838 2903831

Species on line

Panicum	Ludwigia
rt. cap.	Lendgra
Centaria	Eragrostis
Hypemut	Polypunc
Eragrostis	Hydrunbe
Leopacapi	Sagilunc
Dioding	Aster sub
Bacomon	Pontcord
Cophaet	Asclera
Lobefol	Axonfuc
Andrglompumi	Myrice
Ludwigia	Cirs nutt
Bacoro	Axonfiss
Phyl nodi	Eranophi
Bisyangu	Fimbrymo
Ludwalat	Kyllbred
Seba stel	

Quad. 2.5 m Intercept 1 (2.5)

Panicum

Quad. 2.5 m Intercept 2 (5)

Panicum
Hypemuti

Quad. 2.5 m Intercept 3 (7.5)

Dioding
Panicum

Quad. 2.5 m Intercept 4 (10)

Panicum
Ludwigia

Quad. 2.5 m Intercept 5 (12.5)

Panicum

Quad. 2.5 m Intercept 6 (15)

Bacoro Panicum
Centaria

Quad. 2.5 m Intercept 7 (17.5)

Panicum

Quad. 2.5 m Intercept 8 (20)

Panicum
Bacomon

Quad. 2.5 m Intercept 9 (22.5)

Panicum

Quad. 2.5 m Intercept10 (25)	Panirepe Eupacapp			
Quad. 2.5 m Intercept11 (27.5)	Panirepe Bacomom			
Quad. 2.5 m Intercept12 (30)	Panirepe Bucocaro			
Quad. 2.5 m Intercept13 (32.5)	Panirepe			
Quad. 2.5 m Intercept14 (35)	Panirepe			
Quad. 2.5 m Intercept15 (37.5)	Panirepe Bacomom			
Quad. 2.5 m Intercept16 (40)	Panirepe Hyperuti			
Quad. 2.5 m Intercept17 (42.5)	Panirepe			
Quad. 2.5 m Intercept18 (45)	Panirepe Bacomom			
Quad. 2.5 m Intercept19 (47.5)	Centasia Lindgron			
Quad. 2.5 m Intercept20 (50)	Panirepe Bacomom			
Quad. 2.5 m Intercept21 (2.5)	Lindgron			
Quad. 2.5 m Intercept22 (5)	Panirepe			
Quad. 2.5 m Intercept23 (7.5)	Panirepe			
Quad. 2.5 m Intercept24 (10)	Panirepe			
Quad. 2.5 m Intercept25 (12.5)	Panirepe Centasia			
Quad. 2.5 m Intercept26 (15)	Portcard Bucocaro	Hydrumbe		
Quad. 2.5 m Intercept27 (17.5)	Bacomom			
Quad. 2.5 m Intercept28 (20)	Centasia Ludwrepe			
Quad. 2.5 m Intercept29 (22.5)	radving Panirepe			
Quad. 2.5 m Intercept30 (25)	Panirepe			
Quad. 2.5 m Intercept31 (27.5)	Panirepe centasia			
Quad. 2.5 m Intercept32 (30)	Panirepe centasia			
Quad. 2.5 m Intercept33 (32.5)	_____			

Quad. 2.5 m Intercept34 (35)	Pauirepe			
Quad. 2.5 m Intercept35 (37.5)	Bacomann Pauirepe			
Quad. 2.5 m Intercept36 (40)	Pauirepe			
Quad. 2.5 m Intercept37 (42.5)	Piodung Pauirepe			
Quad. 2.5 m Intercept38 (45)	Centasia			
Quad. 2.5 m Intercept39 (47.5)	Pauirepe centasia			
Quad. 2.5 m Intercept40 (50)	Bacomann Phylodi			
Quad. 2.5 m Intercept41 (2.5)	Cirsutt			
Quad. 2.5 m Intercept42 (5)	Diodung Pauirepe			
Quad. 2.5 m Intercept43 (7.5)	Phylodi Pauirepe			
Quad. 2.5 m Intercept44 (10)	Pauirepe			
Quad. 2.5 m Intercept45 (12.5)	Bacomann			
Quad. 2.5 m Intercept46 (15)	Axonfiss			
Quad. 2.5 m Intercept47 (17.5)	Centasia Myriceri	Axonfure		
Quad. 2.5 m Intercept48 (20)	Myriceri Axonfure			
Quad. 2.5 m Intercept49 (22.5)	Axonfure			
Quad. 2.5 m Intercept50 (25)	Axonfure			
Quad. 2.5 m Intercept51 (27.5)	Axonfure			
Quad. 2.5 m Intercept52 (30)	Axonfure			
Quad. 2.5 m Intercept53 (32.5)	Pauirepe Eremphi			
Quad. 2.5 m Intercept54 (35)	Pauirepe Eremphi			
Quad. 2.5 m Intercept55 (37.5)	P. centasia	Bacomann		
Quad. 2.5 m Intercept56 (40)	Axonfure Eridguer			
Quad. 2.5 m Intercept57 (42.5)	Pauirepe			

Quad. 2.5 m Intercept58 (45)	Phyl nodi Axonfure			
Quad. 2.5 m Intercept59 (47.5)	Fimbcymo			
Quad. 2.5 m Intercept60 (50)	Phyl nodi Axonfure			
Quad. 2.5 m Intercept61 (2.5)	Myricei Eri squer			
Quad. 2.5 m Intercept62 (5)	Phyl nodi Pari rege	Bacomonn		
Quad. 2.5 m Intercept63 (7.5)	Bacomonn Phyl nodi			
Quad. 2.5 m Intercept64 (10)	Axonfiss			
Quad. 2.5 m Intercept65 (12.5)	Phyl nodi			
Quad. 2.5 m Intercept66 (15)	Pari rege Axonfiss			
Quad. 2.5 m Intercept67 (17.5)	Ludwalat Axonfiss	Killbreu		
Quad. 2.5 m Intercept68 (20)	Pari rege			
Quad. 2.5 m Intercept69 (22.5)	Axonfure			
Quad. 2.5 m Intercept70 (25)	Phyl nodi Pari rege			
Quad. 2.5 m Intercept71 (27.5)	Phyl nodi Pari rege			
Quad. 2.5 m Intercept72 (30)	Pari rege			
Quad. 2.5 m Intercept73 (32.5)	Erogeri Axonfure			
Quad. 2.5 m Intercept74 (35)	Pari rege Phyl nodi			
Quad. 2.5 m Intercept75 (37.5)	Phyl nodi Axonfure			
Quad. 2.5 m Intercept76 (40)	Phyl nodi Ludwmicr			
Quad. 2.5 m Intercept77 (42.5)	Bacomonn			
Quad. 2.5 m Intercept78 (45)	—			
Quad. 2.5 m Intercept79 (47.5)	Pioduing Bacomonn			
Quad. 2.5 m Intercept80 (50)	Pari rege Eri squer			
Quad. 2.5 m Intercept81 (2.5)	Centasia Pari rege			

Quad. 2.5 m Intercept82 (5)	Centasia				
Quad. 2.5 m Intercept83 (7.5)	Centasia				
Quad. 2.5 m Intercept84 (10)	P				
Quad. 2.5 m Intercept85 (12.5)	P				
Quad. 2.5 m Intercept86 (15)	Bacomdan				
Quad. 2.5 m Intercept87 (17.5)	P				
Quad. 2.5 m Intercept88 (20)	P.				
Quad. 2.5 m Intercept89 (22.5)	P.				
Quad. 2.5 m Intercept90 (25)	Ludwmicr				
Quad. 2.5 m Intercept91 (27.5)	P.				
Quad. 2.5 m Intercept92 (30)	P.				
Quad. 2.5 m Intercept93 (32.5)	P.				
Quad. 2.5 m Intercept94 (35)	P.				
Quad. 2.5 m Intercept95 (37.5)	P.				
Quad. 2.5 m Intercept96 (40)	P.				
Quad. 2.5 m Intercept97 (42.5)	Bancano				
Quad. 2.5 m Intercept98 (45)	P.				
Quad. 2.5 m Intercept99 (47.5)	P.				
Quad. 2.5 m Intercept100 (50)	P.				